

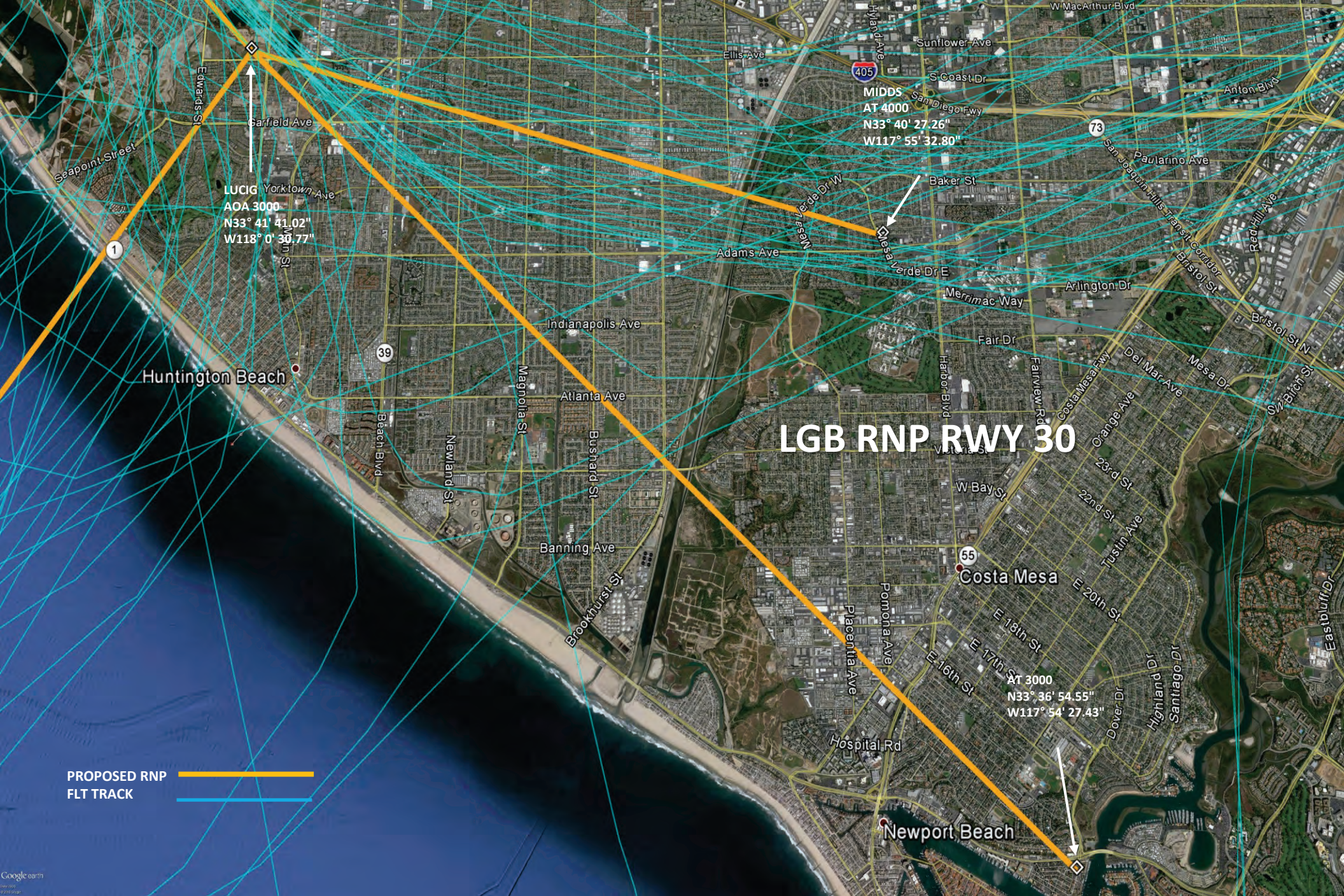
LGB RNP RWY 30

PROPOSED RNP FLT TRACK

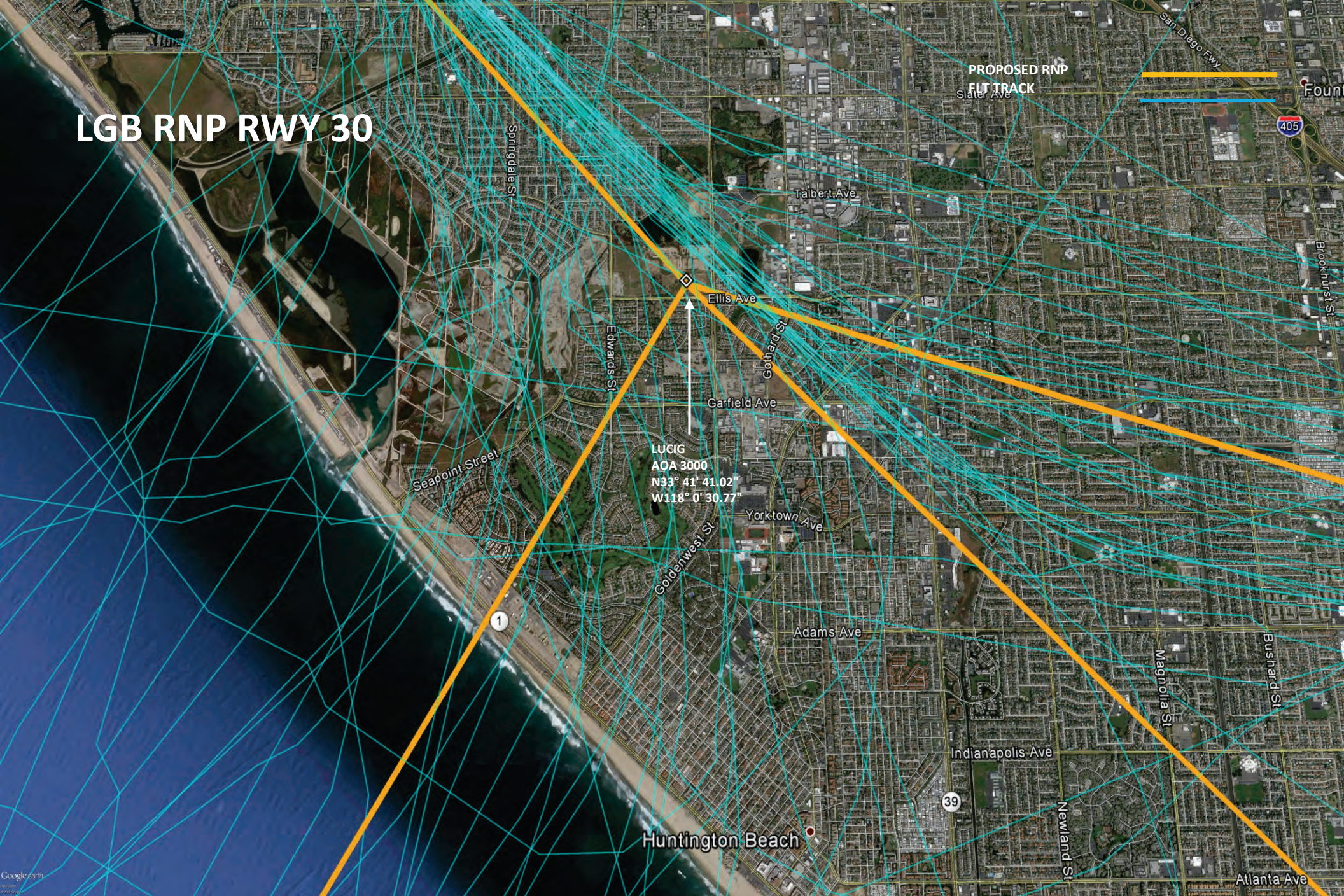
LUCIG
AOA 3000
N33° 41' 41.02"
W118° 0' 30.77"

MIDD5
AT 4000
N33° 40' 27.26"
W117° 55' 32.80"

Streets and Landmarks:
Fountain Valley, W Segerstrom Ave, S Harbor Blvd, Harbor Blvd, Adams Ave, Placentia Ave, W Wilson St, Atlanta Ave, Magnolia St, Newland St, Indianapolis Ave, Bushard St, Brookhurst St, Edwards St, Garfield Ave, Yorktown Ave, Goldenwest St, Huntington Beach, 39, 1, San Diego Fwy, 405, Talbert Ave, Ellis Ave, Mald St, Euclid St, Newhope St, Baker St, Mesa Verde Dr, W.



LGB RNP RWY 30

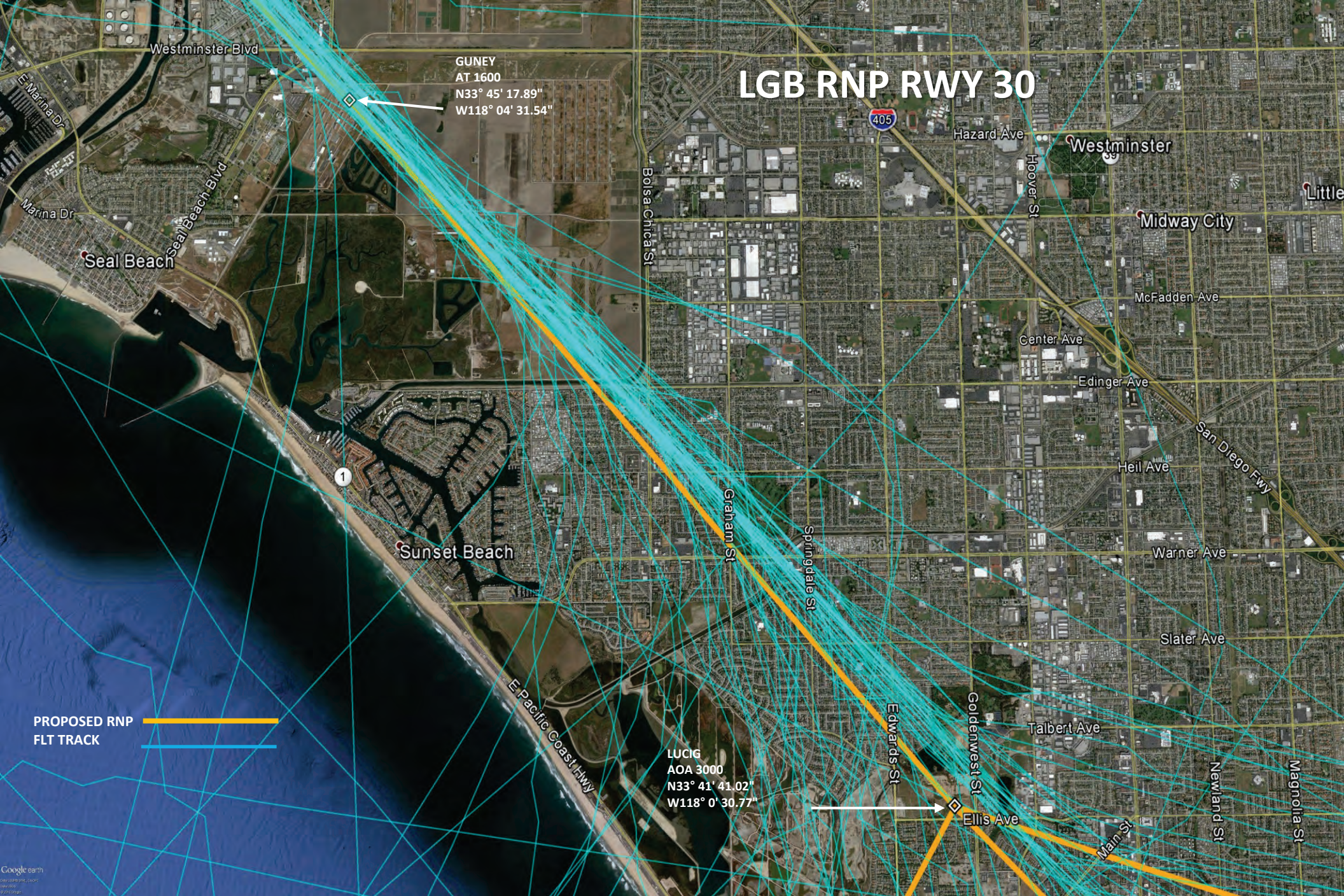


LGB RNP RWY 30

GUNEY
AT 1600
N33° 45' 17.89"
W118° 04' 31.54"

LUCIG
AOA 3000
N33° 41' 41.02"
W118° 0' 30.77"

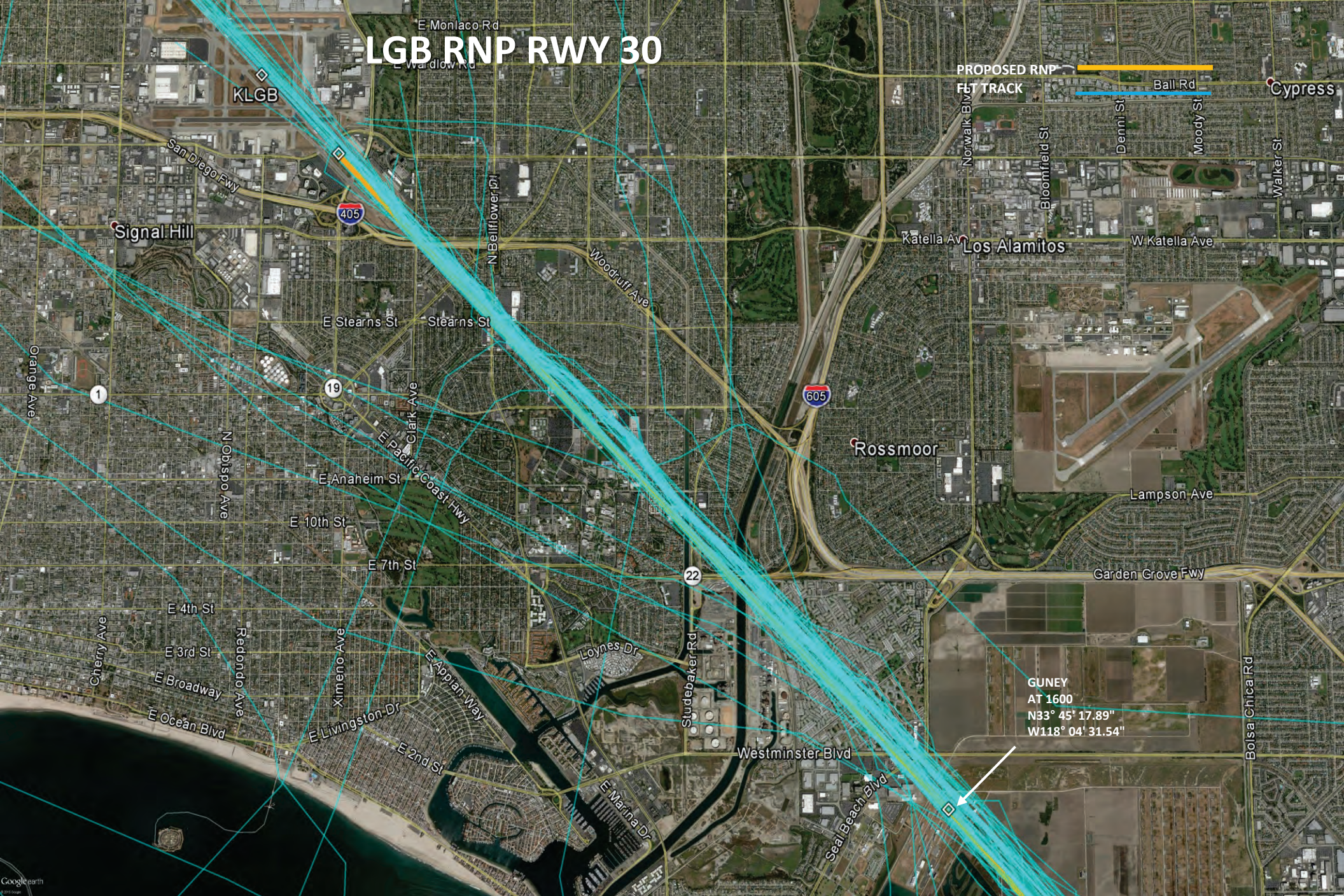
PROPOSED RNP
FLT TRACK



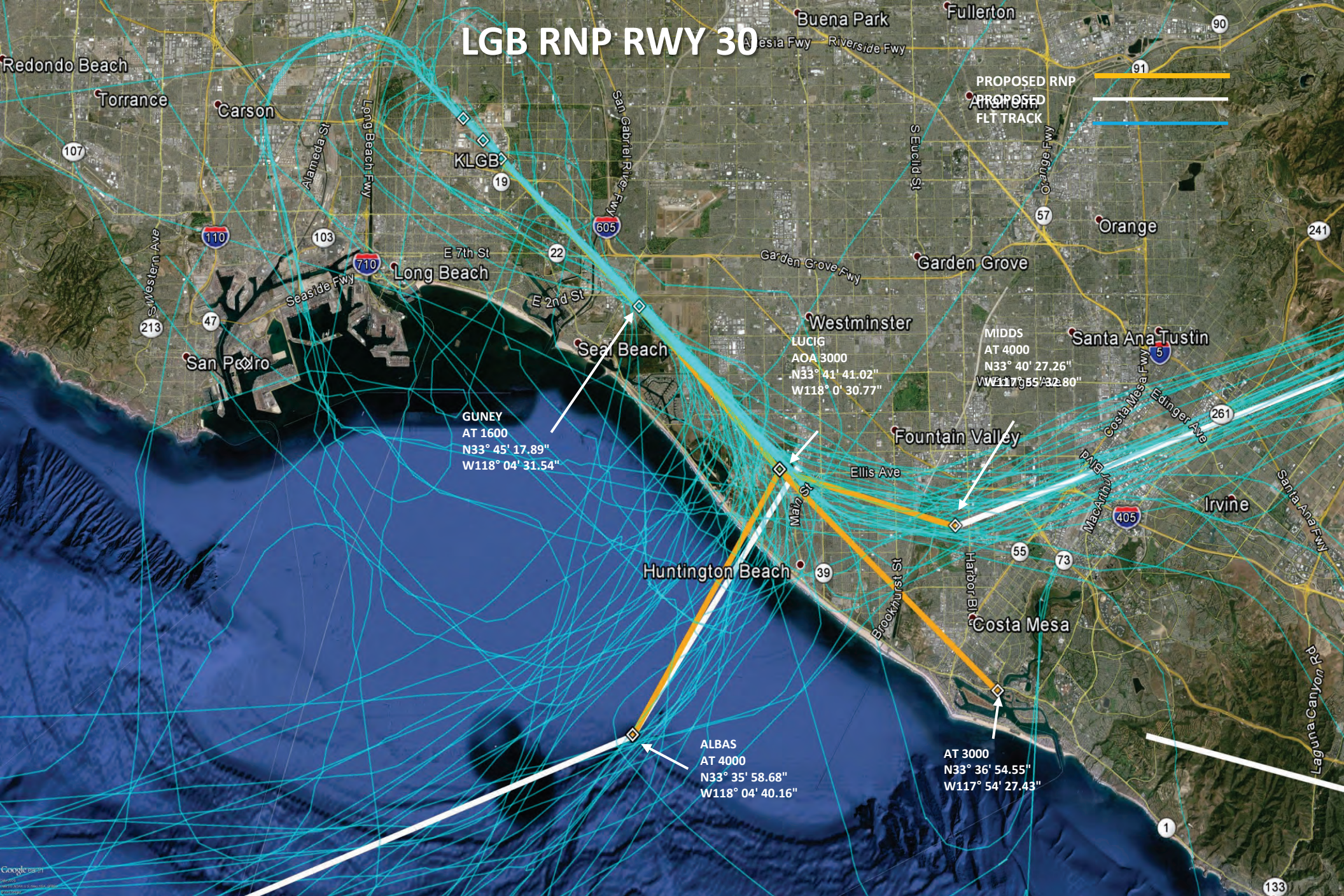
E Monlaco Rd

LGB RNP RWY 30

E Waldlow Rd

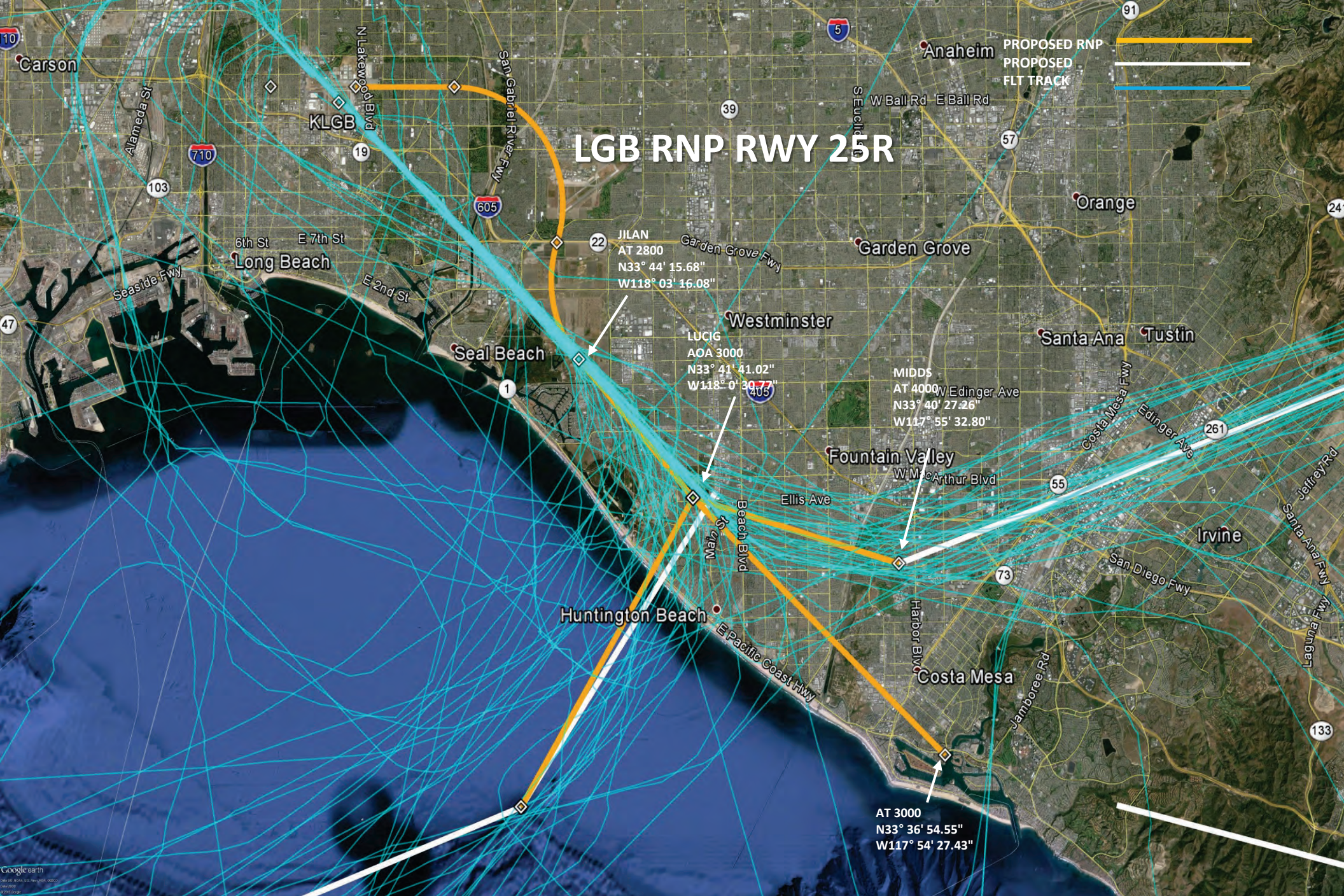


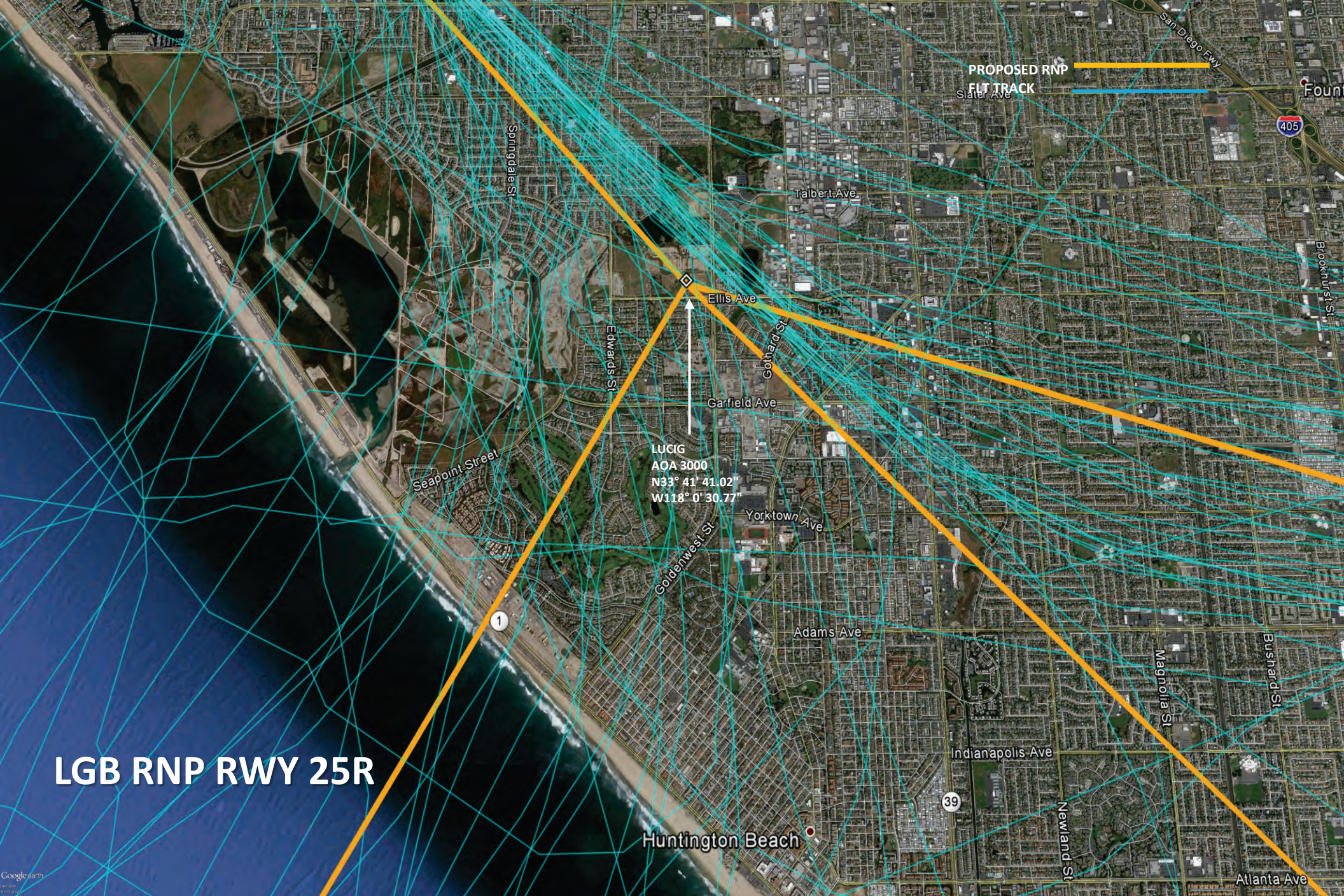
LGB RNP RWY 30



Google earth
Data USGS
Data DIO, HYDRA, JJ G. Henry, NOAA, GEBCO

GR





LGB RNP RWY 25R

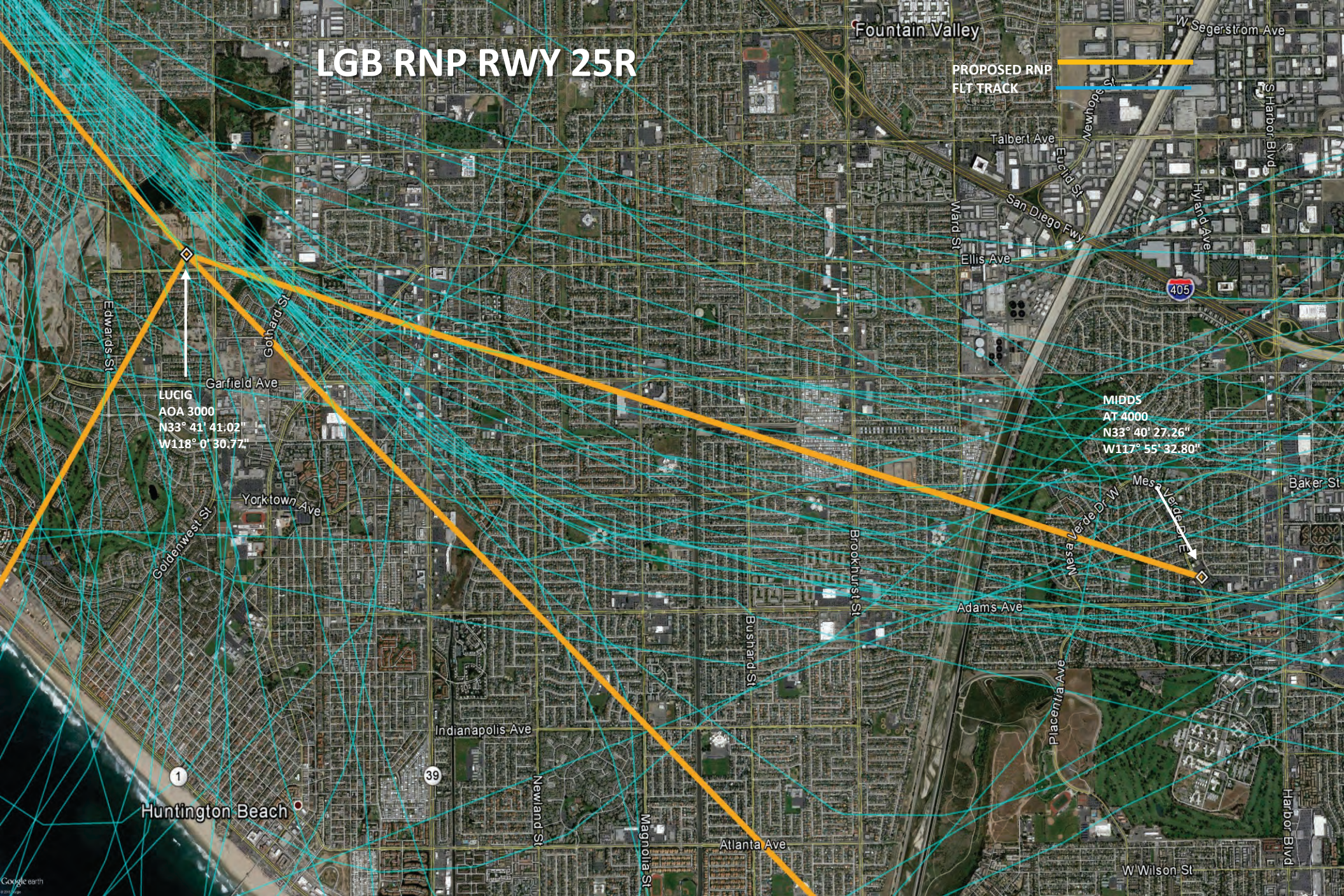
PROPOSED RNP
FLT TRACK

LUCIG
AOA 3000
N33° 41' 41.02"
W118° 0' 30.77"



PROPOSED RNP FLT TRACK

LGB RNP RWY 25R



LGB RNP RWY 25R





LGB RNP RWY 25R

PROPOSED RNP
FLT TRACK

CASIV
N33° 46' 26.37"
W118° 03' 47.98"

LGB RNP RWY 12

AT 1500
N33° 51' 26.88"
W118° 13' 49.45"

JUXAT
AOA 2500
N33° 48' 56.90"
W118° 15' 26.41"

BREKE
AT 3000
N33° 45' 46.07"
W118° 14' 22.11"

PROPOSED RNP
PROPOSED
FLT TRACK



LGB RNP RWY 12

West Carson

JUXAT E 222
AOA 2500
N33° 48' 56.90"
W118° 15' 26.41"

**PROPOSED RNP
FLT TRACK**

Wilmington

BREKE
AT 3000
N33° 45' 46.07"
W118° 14' 22.11"

Long Beach

LGB RNP RWY 12

