

# **LGB TOPMM SID\_FINAL\_SUBMITTED**

**Point Of Contact**

**Organization Name - Southern California Metroplex**

**POC's Name - Robert E. Henry-Metroplex Lead/Jose Gonzalez-NATCA Co-Lead**

**Telephone Number - (661) 265-8434**

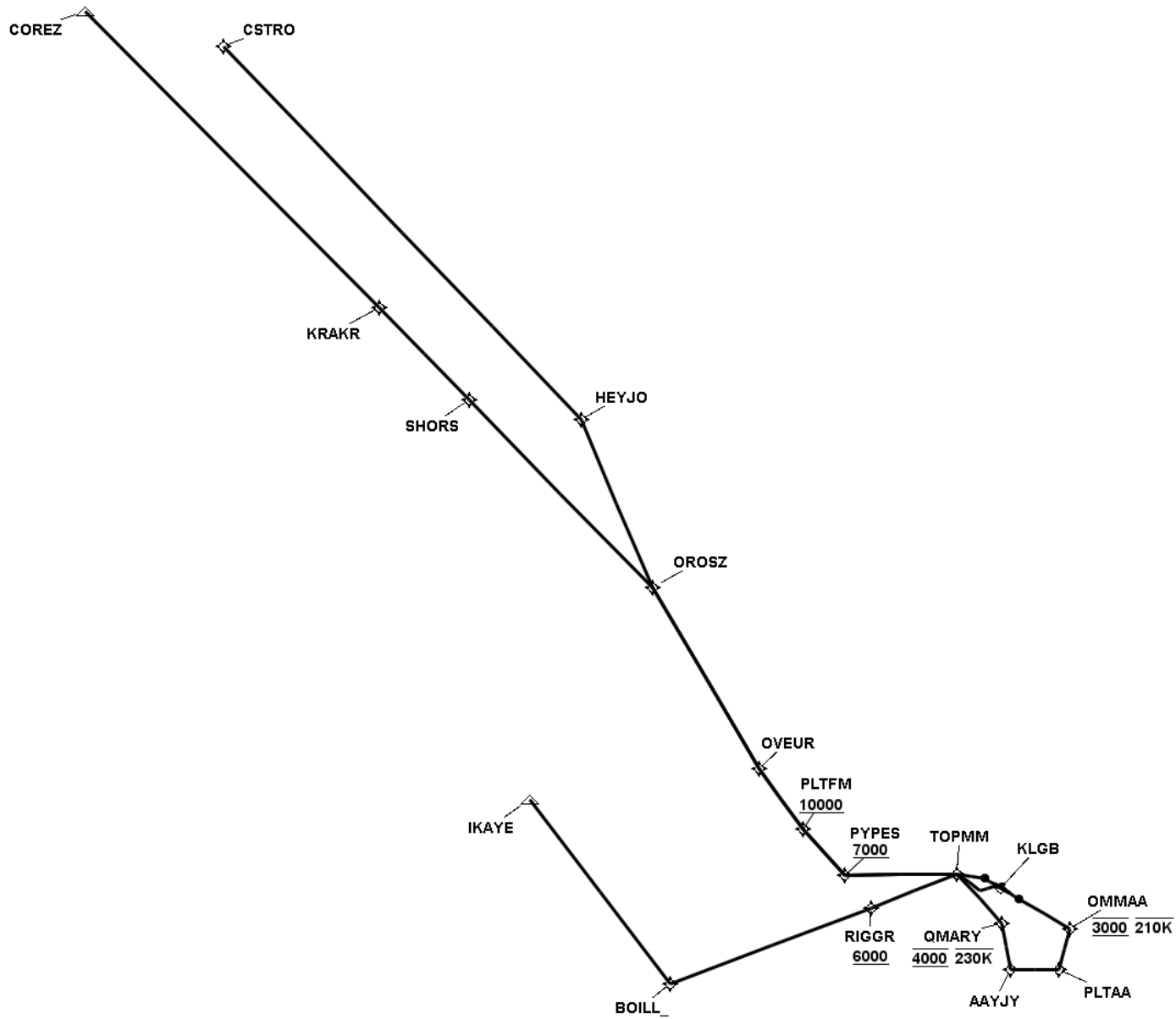
**FAX Number - 661-265-8338**

**Email Address - Robert.Henry@faa.gov;Jose.J.Gonzalez@faa.gov**

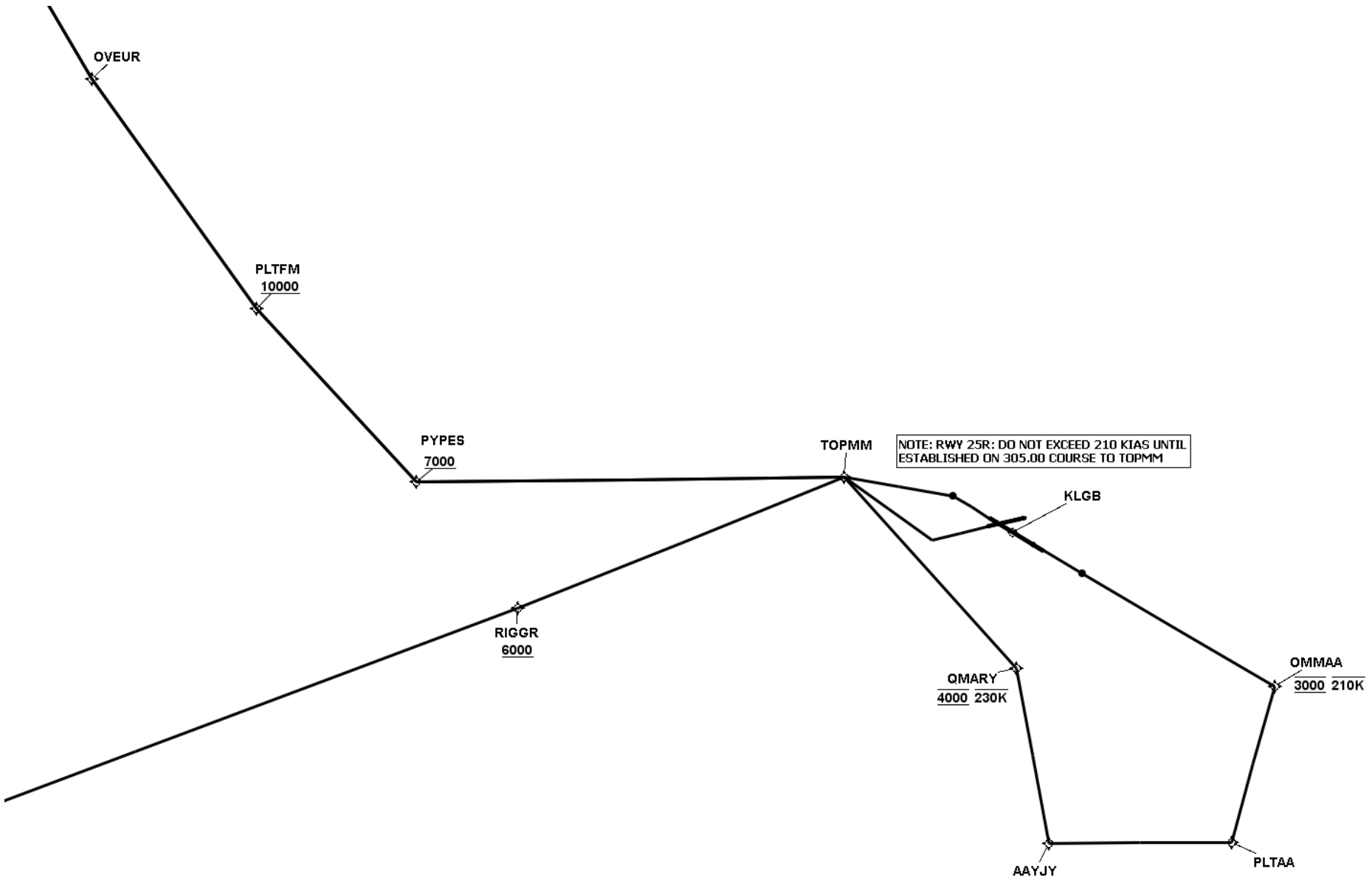
## **TARGETS Distribution Package**

**Version:5.0.4.1**

**Date: Wed Nov 18 12:27:09 EST 2015**



LGB TOPMM SID\_FINAL\_SUBMITTED



LGB TOPMM SID\_FINAL\_SUBMITTED

### Runway Transition Data - RW12

DB	End Point	Latitude (D° M' S.ss")	Longitude (D° M' S.ss")	FO/FB	Leg	TC	MC	Distance	Altitude	Speed	MEA	MOCA	Arc Center Lat (D° M' S.ss")	Arc Center Lon (D° M' S.ss")	Arc Radius (NM)
AVNIS	DER RW12	N33 48 24.71	W118 08 17.31												
					VA	134.72	120.72	1.15	+600						
	OMMAA WP	N33 43 37.42	W118 02 21.25	FB	DF			5.73	3000	-210					
	PLTAA WP	N33 40 02.19	W118 04 50.11	FB	TF	210.04	196.04	4.14							
	AAYJY WP	N33 41 07.97	W118 10 20.55	FB	TF	283.42	269.42	4.72							
	QMARY WP	N33 45 41.01	W118 10 00.09	FB	TF	3.58	349.58	4.55	4000	-230					
	TOPMM WP	N33 51 28.11	W118 13 44.48	FB	TF	331.66	317.66	6.56							

### Runway Transition Data - RW25R

DB	End Point	Latitude (D° M' S.ss")	Longitude (D° M' S.ss")	FO/FB	Leg	TC	MC	Distance	Altitude	Speed	MEA	MOCA	Arc Center Lat (D° M' S.ss")	Arc Center Lon (D° M' S.ss")	Arc Radius (NM)
AVNIS	DER RW25R	N33 49 21.91	W118 09 48.67												
					VI	270.20	256.20	1.45	+600	-210					
	TOPMM WP	N33 51 28.11	W118 13 44.48	FB	CF	319.00	305.00	2.78							

### Runway Transition Data - RW30

DB	End Point	Latitude (D° M' S.ss")	Longitude (D° M' S.ss")	FO/FB	Leg	TC	MC	Distance	Altitude	Speed	MEA	MOCA	Arc Center Lat (D° M' S.ss")	Arc Center Lon (D° M' S.ss")	Arc Radius (NM)
AVNIS	DER RW30	N33 49 34.32	W118 09 41.52												
					VA	314.73	300.73	1.08	+600						
	TOPMM WP	N33 51 28.11	W118 13 44.48	FB	DF			2.84							

### En Route Transition Data - COREZ

DB	End Point	Latitude (D° M' S.ss")	Longitude (D° M' S.ss")	FO/FB	Leg	TC	MC	Distance	Altitude	Speed	MEA	MOCA	Arc Center Lat (D° M' S.ss")	Arc Center Lon (D° M' S.ss")	Arc Radius (NM)
	TOPMM WP	N33 51 28.11	W118 13 44.48		IF										
	PYPES WP	N33 54 00.43	W118 26 39.29	FB	TF	283.32	269.32	11.05	+7000		2800				
	PLTFM WP	N33 59 16.50	W118 30 08.90	FB	TF	331.09	317.09	6.01	+10000		7000				
	OVEUR WP	N34 05 59.64	W118 33 23.22	FB	TF	338.15	324.15	7.23			10000				
AVNIS	OROSZ WP	N34 25 36.18	W118 40 27.01	FB	TF	343.38	329.38	20.43			12000				
	SHORS WP	N34 47 43.61	W118 56 07.37	FB	TF	329.72	315.72	25.60			14000				
	KRAKR WP	N34 58 30.50	W119 03 49.98	FB	TF	329.53	315.53	12.49			14000				
AVNIS	COREZ WP	N35 33 24.00	W119 29 01.98	FB	TF	329.48	315.48	40.49			14000				

## En Route Transition Data - CSTRO

DB	End Point	Latitude (D° M' S.ss")	Longitude (D° M' S.ss")	FO/FB	Leg	TC	MC	Distance	Altitude	Speed	MEA	MOCA	Arc Center Lat (D° M' S.ss")	Arc Center Lon (D° M' S.ss")	Arc Radius (NM)
	TOPMM WP	N33 51 28.11	W118 13 44.48		IF										
	PYPES WP	N33 54 00.43	W118 26 39.29	FB	TF	283.32	269.32	11.05	+7000		2800				
	PLTFM WP	N33 59 16.50	W118 30 08.90	FB	TF	331.09	317.09	6.01	+10000		7000				
	OVEUR WP	N34 05 59.64	W118 33 23.22	FB	TF	338.15	324.15	7.23			10000				
AVNIS	OROSZ WP	N34 25 36.18	W118 40 27.01	FB	TF	343.38	329.38	20.43			12000				
	HEYJO WP	N34 43 10.33	W118 43 53.04	FB	TF	350.83	336.83	17.77			14000				
	CSTRO WP	N35 26 52.66	W119 14 07.00	FB	TF	330.52	316.52	50.20			14000				

## En Route Transition Data - IKAYE

DB	End Point	Latitude (D° M' S.ss")	Longitude (D° M' S.ss")	FO/FB	Leg	TC	MC	Distance	Altitude	Speed	MEA	MOCA	Arc Center Lat (D° M' S.ss")	Arc Center Lon (D° M' S.ss")	Arc Radius (NM)
	TOPMM WP	N33 51 28.11	W118 13 44.48		IF										
	RIGGR WP	N33 50 14.15	W118 24 32.84	FB	TF	262.26	248.26	9.08	+6000		3500				
	BOILL_ WP	N33 47 51.44	W118 49 42.54	FB	TF	263.66	249.66	21.10			6000				
AVNIS	IKAYE WP	N34 08 35.00	W119 00 37.00	FB	TF	336.37	322.37	22.59			10000				

## Waypoint Data

DB	Waypoint	Arc Center	Lat-Long (DMS.S)	Latitude (Deg)	Longitude (Deg)	Latitude (D°, M.mm')	Longitude (D°, M.mm')	Latitude (D° M' S.ss")	Longitude (D° M' S.ss")
	AAYJY WP		334107.97N-1181020.55W	N 33.6855480	W 118.1723744	N33 41.133	W118 10.342	N33 41 07.97	W118 10 20.55
	BOILL_ WP		334751.44N-1184942.54W	N 33.7976220	W 118.8284842	N33 47.857	W118 49.709	N33 47 51.44	W118 49 42.54
AVNIS	COREZ WP		353324.00N-1192901.98W	N 35.5566667	W 119.4838833	N35 33.400	W119 29.033	N35 33 24.00	W119 29 01.98
	CSTRO WP		352652.66N-1191407.00W	N 35.4479611	W 119.2352778	N35 26.878	W119 14.117	N35 26 52.66	W119 14 07.00
	HEYJO WP		344310.33N-1184353.04W	N 34.7195361	W 118.7314000	N34 43.172	W118 43.884	N34 43 10.33	W118 43 53.04
AVNIS	IKAYE WP		340835.00N-1190037.00W	N 34.1430556	W 119.0102778	N34 08.583	W119 00.617	N34 08 35.00	W119 00 37.00
	KRAKR WP		345830.50N-1190349.98W	N 34.9751393	W 119.0638846	N34 58.508	W119 03.833	N34 58 30.50	W119 03 49.98
	OMMAA WP		334337.42N-1180221.25W	N 33.7270606	W 118.0392372	N33 43.624	W118 02.354	N33 43 37.42	W118 02 21.25
AVNIS	OROSZ WP		342536.18N-1184027.01W	N 34.4267167	W 118.6741694	N34 25.603	W118 40.450	N34 25 36.18	W118 40 27.01
	OVEUR WP		340559.64N-1183323.22W	N 34.0999000	W 118.5564511	N34 05.994	W118 33.387	N34 05 59.64	W118 33 23.22
	PLTAA WP		334002.19N-1180450.11W	N 33.6672760	W 118.0805861	N33 40.037	W118 04.835	N33 40 02.19	W118 04 50.11
	PLTFM WP		335916.50N-1183008.90W	N 33.9879167	W 118.5024722	N33 59.275	W118 30.148	N33 59 16.50	W118 30 08.90
	PYPES WP		335400.43N-1182639.29W	N 33.9001181	W 118.4442468	N33 54.007	W118 26.655	N33 54 00.43	W118 26 39.29
	QMARY WP		334541.01N-1181000.09W	N 33.7613917	W 118.1666917	N33 45.684	W118 10.001	N33 45 41.01	W118 10 00.09
	RIGGR WP		335014.15N-1182432.84W	N 33.8372634	W 118.4091222	N33 50.236	W118 24.547	N33 50 14.15	W118 24 32.84
	SHORS WP		344743.61N-1185607.37W	N 34.7954469	W 118.9353812	N34 47.727	W118 56.123	N34 47 43.61	W118 56 07.37
	TOPMM WP		335128.11N-1181344.48W	N 33.8578091	W 118.2290212	N33 51.469	W118 13.741	N33 51 28.11	W118 13 44.48

No FAA checks included.

### Database Effective Dates

Database	Date
UddfObstacle	N/A
Tiled AVNII	N/A
OEAAA	N/A
NFDC	N/A
IFP_OFFLINE	N/A
AVNIS	N/A
DOF	N/A
AVNII_OFFLINE	N/A
AVNII	N/A
CIFP	N/A

**Notes:**