

OHSEA RNAV

Point Of Contact

Organization Name - Southern California Metroplex

POC's Name - Robert E. Henry-Metroplex Lead/Jose Gonzalez-NATCA Co-Lead

Telephone Number - (661) 265-8434

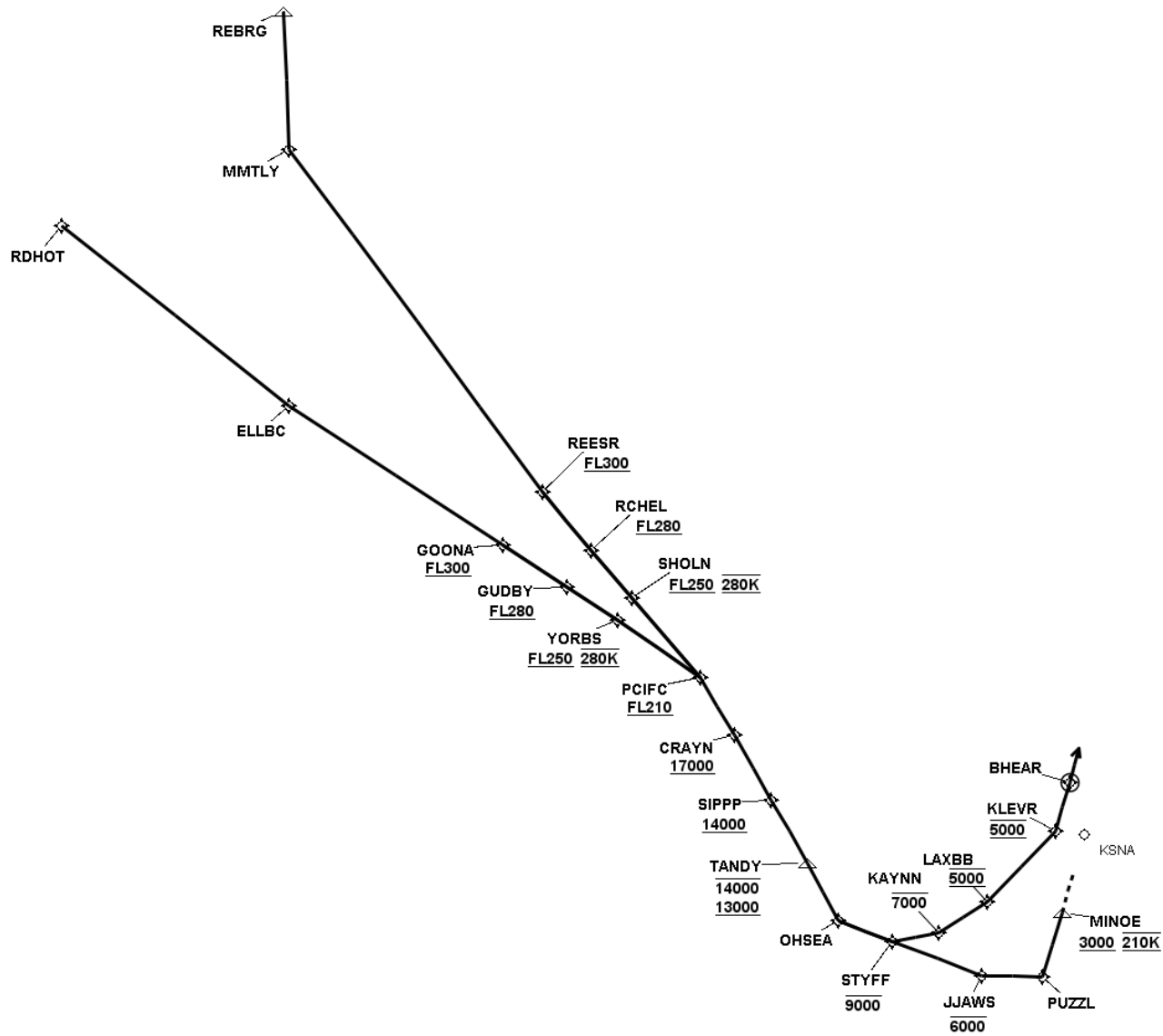
FAX Number - (661) 265-8338

Email Address - Robert.Henry@faa.gov;Jose.J.Gonzalez@faa.gov

TARGETS Distribution Package

Version:5.0.5

Date: Tue Apr 12 12:28:36 PDT 2016



OHSEA RNAV

En Route Transition Data - GOONA

DB	End Point	Latitude (D° M' S.ss")	Longitude (D° M' S.ss")	FO/FB	Leg	TC	MC	Distance	Altitude	Speed	MEA	MOCA	Arc Center Lat (D° M' S.ss")	Arc Center Lon (D° M' S.ss")	Arc Radius (NM)
	GOONA WP	N34 38 02.26	W119 19 03.85		IF				+30000						
	GUDBY WP	N34 30 20.49	W119 09 49.56	FB	TF	135.16	123.16	10.83	+28000		17000	9700			
	YORBS WP	N34 24 07.71	W119 02 35.65	FB	TF	136.01	124.01	8.62	+25000	280	17000	9000			
	PCIFC WP	N34 13 45.15	W118 50 45.59	FB	TF	136.52	124.52	14.26	+21000		17000	7200			

En Route Transition Data - RDHOT

DB	End Point	Latitude (D° M' S.ss")	Longitude (D° M' S.ss")	FO/FB	Leg	TC	MC	Distance	Altitude	Speed	MEA	MOCA	Arc Center Lat (D° M' S.ss")	Arc Center Lon (D° M' S.ss")	Arc Radius (NM)
	RDHOT WP	N35 35 33.31	W120 21 36.43		IF										
	ELLBC WP	N35 03 48.28	W119 50 01.16	FB	TF	140.66	128.66	40.90			17000	6900			
	GOONA WP	N34 38 02.26	W119 19 03.85	FB	TF	135.13	123.13	36.21	+30000		17000	9700			
	GUDBY WP	N34 30 20.49	W119 09 49.56	FB	TF	135.16	123.16	10.83	+28000		17000	9700			
	YORBS WP	N34 24 07.71	W119 02 35.65	FB	TF	136.01	124.01	8.62	+25000	280	17000	9000			
	PCIFC WP	N34 13 45.15	W118 50 45.59	FB	TF	136.52	124.52	14.26	+21000		17000	7200			

En Route Transition Data - REBRG

DB	End Point	Latitude (D° M' S.ss")	Longitude (D° M' S.ss")	FO/FB	Leg	TC	MC	Distance	Altitude	Speed	MEA	MOCA	Arc Center Lat (D° M' S.ss")	Arc Center Lon (D° M' S.ss")	Arc Radius (NM)
AVNIS	REBRG WP	N35 58 53.00	W119 36 53.00		IF										
	MMTLY WP	N35 39 29.51	W119 40 49.65	FB	TF	189.43	177.43	19.63			17000	2700			
	REESR WP	N34 44 11.51	W119 10 33.25	FB	TF	155.66	143.66	60.53	+30000		17000	11100			
	RCHEL WP	N34 34 37.76	W119 04 28.71	FB	TF	152.27	140.27	10.78	+28000		17000	11100			
	SHOLN WP	N34 26 51.39	W118 59 26.98	FB	TF	151.80	139.80	8.80	+25000	280	17000	9000			
	PCIFC WP	N34 13 45.15	W118 50 45.59	FB	TF	151.14	139.14	14.93	+21000		17000	7300			

En Route Transition Data - REESR

DB	End Point	Latitude (D° M' S.ss")	Longitude (D° M' S.ss")	FO/FB	Leg	TC	MC	Distance	Altitude	Speed	MEA	MOCA	Arc Center Lat (D° M' S.ss")	Arc Center Lon (D° M' S.ss")	Arc Radius (NM)
	REESR WP	N34 44 11.51	W119 10 33.25		IF				+30000						
	RCHEL WP	N34 34 37.76	W119 04 28.71	FB	TF	152.27	140.27	10.78	+28000		17000	11100			
	SHOLN WP	N34 26 51.39	W118 59 26.98	FB	TF	151.80	139.80	8.80	+25000	280	17000	9000			
	PCIFC WP	N34 13 45.15	W118 50 45.59	FB	TF	151.14	139.14	14.93	+21000		17000	7300			

Common Route Data - PCIFC

DB	End Point	Latitude (D° M' S.ss")	Longitude (D° M' S.ss")	FO/FB	Leg	TC	MC	Distance	Altitude	Speed	MEA	MOCA	Arc Center Lat (D° M' S.ss")	Arc Center Lon (D° M' S.ss")	Arc Radius (NM)
	PCIFC WP	N34 13 45.15	W118 50 45.59		IF				+21000						
	CRAYN WP	N34 04 41.05	W118 47 10.15	FB	TF	161.76	149.76	9.53	+17000		17000	5100			
	SIPPP WP	N33 54 32.58	W118 43 14.60	FB	TF	162.11	150.11	10.64	+14000		14000	5100			
AVNIS	TANDY WP	N33 44 47.67	W118 39 29.06	FB	TF	162.14	150.14	10.22	+13000 -14000		13000	2300			
	OHSEA WP	N33 35 45.80	W118 36 17.80	FB	TF	163.54	151.54	9.40			5000	2300			

Runway Transition Data - KSNA:RW02L

DB	End Point	Latitude (D° M' S.ss")	Longitude (D° M' S.ss")	FO/FB	Leg	TC	MC	Distance	Altitude	Speed	MEA	MOCA	Arc Center Lat (D° M' S.ss")	Arc Center Lon (D° M' S.ss")	Arc Radius (NM)
	OHSEA WP	N33 35 45.80	W118 36 17.80		IF										
	STYFF WP	N33 31 18.00	W118 27 56.40	FB	TF	122.50	110.50	8.28	-9000		5000	3100			
	JJAWS WP	N33 23 55.53	W118 14 11.85	FB	TF	122.56	110.56	13.65	-6000		3000	3000			
	PUZZL WP	N33 21 52.78	W118 04 06.49	FB	TF	103.54	91.54	8.69			3000	2300			
AVNIS	MINOE WP	N33 30 15.37	W117 58 38.10	FB	TF	28.69	16.69	9.53	+3000	210	3000	2300			

Runway Transition Data - KSNA:RW20R

DB	End Point	Latitude (D° M' S.ss")	Longitude (D° M' S.ss")	FO/FB	Leg	TC	MC	Distance	Altitude	Speed	MEA	MOCA	Arc Center Lat (D° M' S.ss")	Arc Center Lon (D° M' S.ss")	Arc Radius (NM)
	OHSEA WP	N33 35 45.80	W118 36 17.80		IF										
	STYFF WP	N33 31 18.00	W118 27 56.40	FB	TF	122.50	110.50	8.28	-9000		5000	3100			
	KAYNN WP	N33 31 05.60	W118 19 55.30	FB	TF	91.73	79.73	6.71	-7000		5000	2800			
	LAXBB WP	N33 34 03.00	W118 10 40.80	FB	TF	69.05	57.05	8.27	5000		5000	2300			
	KLEVR WP	N33 41 47.70	W117 56 45.74	FB	TF	56.30	44.30	13.96	5000		5000	2400			
	BHEAR WP	N33 48 13.55	W117 52 41.17	FO	TF	27.88	15.88	7.26			5000	2700			
	BHEAR WP	N33 48 13.55	W117 52 41.17		FM	27.88	15.88								

Waypoint Data

DB	Waypoint	Arc Center	Lat-Long (DMS.S)	Latitude (Deg)	Longitude (Deg)	Latitude (D°, M.mm')	Longitude (D°, M.mm')	Latitude (D° M' S.ss")	Longitude (D° M' S.ss")
	BHEAR WP		334813.55N-1175241.17W	N 33.8037647	W 117.8781037	N33 48.226	W117 52.686	N33 48 13.55	W117 52 41.17
	CRAYN WP		340441.05N-1184710.15W	N 34.0780689	W 118.7861530	N34 04.684	W118 47.169	N34 04 41.05	W118 47 10.15
	ELLBC WP		350348.28N-1195001.16W	N 35.0634117	W 119.8336569	N35 03.805	W119 50.019	N35 03 48.28	W119 50 01.16
	GOONA WP		343802.26N-1191903.85W	N 34.6339610	W 119.3177357	N34 38.038	W119 19.064	N34 38 02.26	W119 19 03.85
	GUDBY WP		343020.49N-1190949.56W	N 34.5056903	W 119.1637665	N34 30.341	W119 09.826	N34 30 20.49	W119 09 49.56
	JJAWS WP		332355.53N-1181411.85W	N 33.3987582	W 118.2366247	N33 23.925	W118 14.197	N33 23 55.53	W118 14 11.85
	KAYNN WP		333105.60N-1181955.30W	N 33.5182222	W 118.3320278	N33 31.093	W118 19.922	N33 31 05.60	W118 19 55.30
	KLEVR WP		334147.70N-1175645.74W	N 33.6965825	W 117.9460383	N33 41.795	W117 56.762	N33 41 47.70	W117 56 45.74
	LAXBB WP		333403.00N-1181040.80W	N 33.5675000	W 118.1780000	N33 34.050	W118 10.680	N33 34 03.00	W118 10 40.80
AVNIS	MINOE WP		333015.37N-1175838.10W	N 33.5042694	W 117.9772500	N33 30.256	W117 58.635	N33 30 15.37	W117 58 38.10
	MMTLY WP		353929.51N-1194049.65W	N 35.6581959	W 119.6804593	N35 39.492	W119 40.828	N35 39 29.51	W119 40 49.65
	OHSEA WP		333545.80N-1183617.80W	N 33.5960556	W 118.6049444	N33 35.763	W118 36.297	N33 35 45.80	W118 36 17.80
	PCIFC WP		341345.15N-1185045.59W	N 34.2292076	W 118.8459980	N34 13.752	W118 50.760	N34 13 45.15	W118 50 45.59
	PUZZL WP		332152.78N-1180406.49W	N 33.3646614	W 118.0684701	N33 21.880	W118 04.108	N33 21 52.78	W118 04 06.49
	RCHEL WP		343437.76N-1190428.71W	N 34.5771561	W 119.0746419	N34 34.629	W119 04.479	N34 34 37.76	W119 04 28.71
	RDHOT WP		353533.31N-1202136.43W	N 35.5925854	W 120.3601182	N35 35.555	W120 21.607	N35 35 33.31	W120 21 36.43
AVNIS	REBRG WP		355853.00N-1193653.00W	N 35.9813889	W 119.6147222	N35 58.883	W119 36.883	N35 58 53.00	W119 36 53.00
	REESR WP		344411.51N-1191033.25W	N 34.7365313	W 119.1759032	N34 44.192	W119 10.554	N34 44 11.51	W119 10 33.25
	SHOLN WP		342651.39N-1185926.98W	N 34.4476076	W 118.9908272	N34 26.856	W118 59.450	N34 26 51.39	W118 59 26.98
	SIPPP WP		335432.58N-1184314.60W	N 33.9090496	W 118.7207214	N33 54.543	W118 43.243	N33 54 32.58	W118 43 14.60
	STYFF WP		333118.00N-1182756.40W	N 33.5216667	W 118.4656667	N33 31.300	W118 27.940	N33 31 18.00	W118 27 56.40
AVNIS	TANDY WP		334447.67N-1183929.06W	N 33.7465750	W 118.6580722	N33 44.794	W118 39.484	N33 44 47.67	W118 39 29.06
NFDC	UTI VOR/DME		370103.43N-1133104.44W	N 37.0176194	W 113.5179000	N37 01.057	W113 31.074	N37 01 03.43	W113 31 04.44
	YORBS WP		342407.71N-1190235.65W	N 34.4021423	W 119.0432367	N34 24.129	W119 02.594	N34 24 07.71	W119 02 35.65

RS Results PCIFC

Last Evaluation: 12-Apr-2016 12:25:24

Reference Software Version: 1.5.3

Route Evaluation for GOONA:PCIFC:KSNA:RW02L

OHSEA RNAV

GOONA:PCIFC:KSNA:RW02L Evaluation Results Part 1/2

Leg Tp	End Pt	Turn Tp	Alt Restr	Alt Restr 2	Spd Restr	Turn Ang	Leg Length	Min Seg Length
IF	GOONA		+30000.0				0.0	0.0
TF	GUDBY	FLY_BY	+28000.0			0.76	10.83	1.0
TF	YORBS	FLY_BY	+25000.0		280.0	0.45	8.62	1.0
TF	PCIFC	FLY_BY	+21000.0			25.13	14.26	9.13
TF	CRAYN	FLY_BY	+17000.0			0.31	9.53	9.13
TF	SIPPP	FLY_BY	+14000.0			0.0	10.64	1.0
TF	TANDY	FLY_BY	+13000.0	-14000.0		1.36	10.22	1.0
TF	OHSEA	FLY_BY				41.08	9.4	2.45
TF	STYFF	FLY_BY	-9000.0			0.01	8.28	2.45
TF	JJAWS	FLY_BY	-6000.0			19.15	13.65	1.69
TF	PUZZL	FLY_BY				74.94	8.69	4.39
TF	MINOE	FLY_BY	+3000.0		210.0	0.88	9.53	2.71

GOONA:PCIFC:KSNA:RW02L Evaluation Results Part 2/2

Leg Tp	End Pt	Turn Tp	DTA1	DTA1 Turn Rad	DTA1 Turn Alt	DTA1 Turn Spd	DTA1 Bank Ang	DTA1 Tailwind	DTA1 True Airspd	DTA1 vGround	DTA2	DTA2 Turn Rad	DTA2 Turn Alt	DTA2 Turn Spd	DTA2 Bank Ang	DTA2 Tailwind	DTA2 True Airspd	DTA2 vGround
IF	GOONA				0.0	0.0							0.0	0.0				
TF	GUDBY	FLY_BY	0.0		30706.85	300.0	0.0	108.0	513.0	570.0	0.35	53.17	28000.0	300.0	5.0	102.0	488.0	565.0
TF	YORBS	FLY_BY	0.35	53.17	28000.0	300.0	5.0	102.0	488.0	565.0	0.19	47.85	25000.0	280.0	5.0	96.0	431.0	536.0
TF	PCIFC	FLY_BY	0.19	47.85	25000.0	280.0	5.0	96.0	431.0	536.0	9.13	40.98	21017.86	280.0	5.0	89.0	402.0	496.0
TF	CRAYN	FLY_BY	9.13	40.98	21017.86	280.0	5.0	89.0	402.0	496.0	0.5	184.41	18635.29	280.0	1.0	84.0	386.0	470.0
TF	SIPPP	FLY_BY	0.5	184.41	18635.29	280.0	1.0	84.0	386.0	470.0	0.0		15976.19	280.0	0.0	79.0	369.0	448.0
TF	TANDY	FLY_BY	0.0		15976.19	280.0	0.0	79.0	369.0	448.0	1.82	152.93	13420.61	280.0	1.0	74.0	354.0	428.0
TF	OHSEA	FLY_BY	1.82	152.93	13420.61	280.0	1.0	74.0	354.0	428.0	2.45	6.54	11070.87	280.0	20.54	69.0	341.0	410.0
TF	STYFF	FLY_BY	2.45	6.54	11070.87	280.0	20.54	69.0	341.0	410.0	0.0		9000.0	250.0	0.0	65.0	294.0	359.0
TF	JJAWS	FLY_BY	0.0		9000.0	250.0	0.0	65.0	294.0	359.0	1.69	9.99	6000.0	250.0	9.57	59.0	281.0	340.0
TF	PUZZL	FLY_BY	1.69	9.99	6000.0	250.0	9.57	59.0	281.0	340.0	2.71	3.53	5383.31	250.0	25.0	58.0	278.0	336.0
TF	MINOE	FLY_BY	2.71	3.53	5383.31	250.0	25.0	58.0	278.0	336.0	0.49	64.52	3000.0	210.0	1.0	53.0	225.0	278.0

GOONA:PCIFC:KSNA:RW02L Obstacle Evaluation

Start Pt	End Pt	Name	Source	AC (H/V (ft) AMSL)	Lat	Long	Height (ft) AMSL	Mnts Area	Pri/Sec Area	ROC (ft)	WCVH (ft)	MOCA (ft)	Min OCS Alt (ft)	Date
GOONA	GUDBY	TerrainPt_15_GOONA:PCIFC:KS NA:RW02L_GOONA:GUDBY		4E (+- 250/+125)	N34° 37' 51.00"	W119° 16' 54.00"	7496.72	true	P	2000.0		9697	9696.72	12-Apr-2016 12:27:41
GUDBY	YORBS	TerrainPt_34_GOONA:PCIFC:KS NA:RW02L_GUDBY:YORBS		4E (+- 250/+125)	N34° 30' 36.00"	W119° 04' 33.00"	6702.76	true	P	2000.0		8903	8902.76	12-Apr-2016 12:27:41
YORBS	PCIFC	TerrainPt_15_GOONA:PCIFC:KS NA:RW02L_YORBS:PCIFC		4E (+- 250/+125)	N34° 27' 30.00"	W119° 00' 33.00"	5000.0	true	P	2000.0		7200	7200.0	12-Apr-2016 12:27:41
PCIFC	CRAYN	TerrainPt_17_GOONA:PCIFC:KS NA:RW02L_PCIFC:CRAYN		4E (+- 250/+125)	N34° 05' 06.00"	W118° 47' 09.00"	2824.8	true	P	2000.0		5025	5024.8	12-Apr-2016 12:27:41
CRAYN	SIPPP	TerrainPt_0_GOONA:PCIFC:KS NA:RW02L_CRAYN:SIPPP		4E (+- 250/+125)	N34° 05' 06.00"	W118° 47' 09.00"	2824.8	true	P	2000.0		5025	5024.8	12-Apr-2016 12:27:41
SIPPP	TANDY	NONE					-1.0	false	S					N/A
TANDY	OHSEA	NONE					-1.0	false	S					N/A
OHSEA	STYFF	TerrainPt_5_GOONA:PCIFC:KS NA:RW02L_OHSEA:STYFF		4E (+- 250/+125)	N33° 27' 36.00"	W118° 34' 09.00"	1807.74	true	S	1023.21		3031	3030.95	12-Apr-2016 12:27:41
STYFF	JJAWS	TerrainPt_28_GOONA:PCIFC:KS NA:RW02L_STYFF:JJAWS		4E (+- 250/+125)	N33° 26' 45.00"	W118° 32' 36.00"	1778.22	true	S	1018.73		2997	2996.94	12-Apr-2016 12:27:41
JJAWS	PUZZL	NONE					-1.0	false	S					N/A
PUZZL	MINOE	NONE					-1.0	false	S					N/A

GOONA:PCIFC:KSNA:RW02L Criteria Failures

No failures.

Route Evaluation for GOONA:PCIFC:KSNA:RW20R

GOONA:PCIFC:KSNA:RW20R Evaluation Results Part 1/2

Leg Tp	End Pt	Turn Tp	Alt Restr	Alt Restr 2	Spd Restr	Turn Ang	Leg Length	Min Seg Length
IF	GOONA		+30000.0				0.0	0.0
TF	GUDBY	FLY_BY	+28000.0			0.76	10.83	1.0
TF	YORBS	FLY_BY	+25000.0		280.0	0.45	8.62	1.0
TF	PCIFC	FLY_BY	+21000.0			25.13	14.26	9.13
TF	CRAYN	FLY_BY	+17000.0			0.31	9.53	9.13
TF	SIPPP	FLY_BY	+14000.0			0.0	10.64	1.0
TF	TANDY	FLY_BY	+13000.0	-14000.0		1.36	10.22	1.0
TF	OHSEA	FLY_BY				41.08	9.4	2.41
TF	STYFF	FLY_BY	-9000.0			30.85	8.28	4.27
TF	KAYNN	FLY_BY	-7000.0			22.75	6.71	3.6
TF	LAXBB	FLY_BY	5000.0			12.83	8.27	3.36
TF	KLEVR	FLY_BY	5000.0			28.55	13.96	3.23
TF	BHEAR	FLY_OVER					7.26	1.62
FM							0.0	0.0

GOONA:PCIFC:KSNA:RW20R Evaluation Results Part 2/2

Leg Tp	End Pt	Turn Tp	DTA1	DTA1 Turn Rad	DTA1 Turn Alt	DTA1 Turn Spd	DTA1 Bank Ang	DTA1 Tailwind	DTA1 True Airspd	DTA1 vGround	DTA2	DTA2 Turn Rad	DTA2 Turn Alt	DTA2 Turn Spd	DTA2 Bank Ang	DTA2 Tailwind	DTA2 True Airspd	DTA2 vGround
IF	GOONA				0.0	0.0							0.0	0.0				
TF	GUDBY	FLY_BY	0.0		30706.85	300.0	0.0	108.0	513.0	570.0	0.35	53.17	28000.0	300.0	5.0	102.0	488.0	565.0
TF	YORBS	FLY_BY	0.35	53.17	28000.0	300.0	5.0	102.0	488.0	565.0	0.19	47.85	25000.0	280.0	5.0	96.0	431.0	536.0
TF	PCIFC	FLY_BY	0.19	47.85	25000.0	280.0	5.0	96.0	431.0	536.0	9.13	40.98	21000.0	280.0	5.0	89.0	402.0	496.0
TF	CRAYN	FLY_BY	9.13	40.98	21000.0	280.0	5.0	89.0	402.0	496.0	0.5	182.07	18312.0	280.0	1.0	83.0	384.0	467.0
TF	SIPPP	FLY_BY	0.5	182.07	18312.0	280.0	1.0	83.0	384.0	467.0	0.0		15652.91	280.0	0.0	78.0	367.0	445.0
TF	TANDY	FLY_BY	0.0		15652.91	280.0	0.0	78.0	367.0	445.0	1.8	150.79	13097.33	280.0	1.0	73.0	352.0	425.0
TF	OHSEA	FLY_BY	1.8	150.79	13097.33	280.0	1.0	73.0	352.0	425.0	2.41	6.44	10747.58	280.0	20.54	68.0	339.0	407.0
TF	STYFF	FLY_BY	2.41	6.44	10747.58	280.0	20.54	68.0	339.0	407.0	1.86	6.73	8676.71	250.0	15.42	64.0	293.0	357.0
TF	KAYNN	FLY_BY	1.86	6.73	8676.71	250.0	15.42	64.0	293.0	357.0	1.74	8.67	7000.0	250.0	11.38	61.0	285.0	346.0
TF	LAXBB	FLY_BY	1.74	8.67	7000.0	250.0	11.38	61.0	285.0	346.0	1.62	14.37	5000.0	250.0	6.42	57.0	276.0	333.0
TF	KLEVR	FLY_BY	1.62	14.37	5000.0	250.0	6.42	57.0	276.0	333.0	1.62	6.35	5000.0	250.0	14.27	57.0	276.0	333.0
TF	BHEAR	FLY_OVER	1.62	6.35	5000.0	250.0	14.27	57.0	276.0	333.0	0.0		5000.0	250.0	0.0	57.0	276.0	333.0
FM			0.0		5000.0	250.0	0.0	57.0	276.0	333.0			0.0	0.0				

OHSEA RNAV

GOONA:PCIFC:KSNA:RW20R Obstacle Evaluation

Start Pt	End Pt	Name	Source	AC (H/V (ft) AMSL)	Lat	Long	Height (ft) AMSL	Mnts Area	Pri/Sec Area	ROC (ft)	WCVH (ft)	MOCA (ft)	Min OCS Alt (ft)	Date
GOONA	GUDBY	TerrainPt_15_GOONA:PCIFC:KS NA:RW02L_GOONA:GUDBY		4E (+- 250/+125)	N34° 37' 51.00"	W119° 16' 54.00"	7496.72	true	P	2000.0		9697	9696.72	12-Apr-2016 12:27:41
GUDBY	YORBS	TerrainPt_34_GOONA:PCIFC:KS NA:RW02L_GUDBY:YORBS		4E (+- 250/+125)	N34° 30' 36.00"	W119° 04' 33.00"	6702.76	true	P	2000.0		8903	8902.76	12-Apr-2016 12:27:41
YORBS	PCIFC	TerrainPt_15_GOONA:PCIFC:KS NA:RW02L_YORBS:PCIFC		4E (+- 250/+125)	N34° 27' 30.00"	W119° 00' 33.00"	5000.0	true	P	2000.0		7200	7200.0	12-Apr-2016 12:27:41
PCIFC	CRAYN	TerrainPt_17_GOONA:PCIFC:KS NA:RW02L_PCIFC:CRAYN		4E (+- 250/+125)	N34° 05' 06.00"	W118° 47' 09.00"	2824.8	true	P	2000.0		5025	5024.8	12-Apr-2016 12:27:41
CRAYN	SIPPP	TerrainPt_0_GOONA:PCIFC:KS NA:RW02L_CRAYN:SIPPP		4E (+- 250/+125)	N34° 05' 06.00"	W118° 47' 09.00"	2824.8	true	P	2000.0		5025	5024.8	12-Apr-2016 12:27:41
SIPPP	TANDY	NONE					-1.0	false	S					N/A
TANDY	OHSEA	NONE					-1.0	false	S					N/A
OHSEA	STYFF	TerrainPt_5_GOONA:PCIFC:KS NA:RW02L_OHSEA:STYFF		4E (+- 250/+125)	N33° 27' 36.00"	W118° 34' 09.00"	1807.74	true	S	1023.21		3031	3030.95	12-Apr-2016 12:27:41
STYFF	KAYNN	TerrainPt_2_GOONA:PCIFC:KS NA:RW20R_STYFF:KAYNN		4E (+- 250/+125)	N33° 26' 39.00"	W118° 32' 09.00"	1535.43	true	S	1048.28		2784	2783.71	12-Apr-2016 12:27:41
KAYNN	LAXBB	NONE					-1.0	false	S					N/A
LAXBB	KLEVR	TerrainPt_36_GOONA:PCIFC:KS NA:RW20R_LAXBB:KLEVR		4E (+- 250/+125)	N33° 40' 57.00"	W118° 00' 21.00"	131.23	true	P	2000.0		2332	2331.23	12-Apr-2016 12:27:41
KLEVR	BHEAR	TerrainPt_48_GOONA:PCIFC:KS NA:RW20R_KLEVR:BHEAR		4E (+- 250/+125)	N33° 49' 54.00"	W117° 49' 57.00"	410.1	true	P	2000.0		2611	2610.1	12-Apr-2016 12:27:41

GOONA:PCIFC:KSNA:RW20R Criteria Failures

No failures.

Route Evaluation for RDHOT:PCIFC:KSNA:RW02L

RDHOT:PCIFC:KSNA:RW02L Evaluation Results Part 1/2

Leg Tp	End Pt	Turn Tp	Alt Restr	Alt Restr 2	Spd Restr	Turn Ang	Leg Length	Min Seg Length
IF	RDHOT						0.0	0.0
TF	ELLBC	FLY_BY				5.83	40.9	1.0
TF	GOONA	FLY_BY	+30000.0			0.26	36.21	1.0
TF	GUDBY	FLY_BY	+28000.0			0.76	10.83	1.0
TF	YORBS	FLY_BY	+25000.0		280.0	0.45	8.62	1.0
TF	PCIFC	FLY_BY	+21000.0			25.13	14.26	9.13
TF	CRAYN	FLY_BY	+17000.0			0.31	9.53	9.13
TF	SIPPP	FLY_BY	+14000.0			0.0	10.64	1.0
TF	TANDY	FLY_BY	+13000.0	-14000.0		1.36	10.22	1.0
TF	OHSEA	FLY_BY				41.08	9.4	2.45
TF	STYFF	FLY_BY	-9000.0			0.01	8.28	2.45
TF	JJAWS	FLY_BY	-6000.0			19.15	13.65	1.69
TF	PUZZL	FLY_BY				74.94	8.69	4.39
TF	MINOE	FLY_BY	+3000.0		210.0	0.88	9.53	2.71

RDHOT:PCIFC:KSNA:RW02L Evaluation Results Part 2/2

Leg Tp	End Pt	Turn Tp	DTA1	DTA1 Turn Rad	DTA1 Turn Alt	DTA1 Turn Spd	DTA1 Bank Ang	DTA1 Tailwind	DTA1 True Airspd	DTA1 vGround	DTA2	DTA2 Turn Rad	DTA2 Turn Alt	DTA2 Turn Spd	DTA2 Bank Ang	DTA2 Tailwind	DTA2 True Airspd	DTA2 vGround
IF	RDHOT				0.0	0.0							0.0	0.0				
TF	ELLBC	FLY_BY	0.0		41000.0	300.0	0.0	128.0	629.0	570.0	2.76	54.11	39758.27	300.0	5.0	126.0	613.0	570.0
TF	GOONA	FLY_BY	2.76	54.11	39758.27	300.0	5.0	126.0	613.0	570.0	0.12	54.11	30706.85	300.0	5.0	108.0	513.0	570.0
TF	GUDBY	FLY_BY	0.12	54.11	30706.85	300.0	5.0	108.0	513.0	570.0	0.35	53.17	28000.0	300.0	5.0	102.0	488.0	565.0
TF	YORBS	FLY_BY	0.35	53.17	28000.0	300.0	5.0	102.0	488.0	565.0	0.19	47.85	25000.0	280.0	5.0	96.0	431.0	536.0
TF	PCIFC	FLY_BY	0.19	47.85	25000.0	280.0	5.0	96.0	431.0	536.0	9.13	40.98	21017.86	280.0	5.0	89.0	402.0	496.0
TF	CRAYN	FLY_BY	9.13	40.98	21017.86	280.0	5.0	89.0	402.0	496.0	0.5	184.41	18635.29	280.0	1.0	84.0	386.0	470.0
TF	SIPPP	FLY_BY	0.5	184.41	18635.29	280.0	1.0	84.0	386.0	470.0	0.0		15976.19	280.0	0.0	79.0	369.0	448.0
TF	TANDY	FLY_BY	0.0		15976.19	280.0	0.0	79.0	369.0	448.0	1.82	152.93	13420.61	280.0	1.0	74.0	354.0	428.0
TF	OHSEA	FLY_BY	1.82	152.93	13420.61	280.0	1.0	74.0	354.0	428.0	2.45	6.54	11070.87	280.0	20.54	69.0	341.0	410.0
TF	STYFF	FLY_BY	2.45	6.54	11070.87	280.0	20.54	69.0	341.0	410.0	0.0		9000.0	250.0	0.0	65.0	294.0	359.0
TF	JJAWS	FLY_BY	0.0		9000.0	250.0	0.0	65.0	294.0	359.0	1.69	9.99	6000.0	250.0	9.57	59.0	281.0	340.0
TF	PUZZL	FLY_BY	1.69	9.99	6000.0	250.0	9.57	59.0	281.0	340.0	2.71	3.53	5383.31	250.0	25.0	58.0	278.0	336.0
TF	MINOE	FLY_BY	2.71	3.53	5383.31	250.0	25.0	58.0	278.0	336.0	0.49	64.52	3000.0	210.0	1.0	53.0	225.0	278.0

OHSEA RNAV

RDHOT:PCIFC:KSNA:RW02L Obstacle Evaluation

Start Pt	End Pt	Name	Source	AC (H/V (ft) AMSL)	Lat	Long	Height (ft) AMSL	Mnts Area	Pri/Sec Area	ROC (ft)	WCVH (ft)	MOCA (ft)	Min OCS Alt (ft)	Date
RDHOT	ELLBC	TerrainPt_10_RDHOT:PCIFC:KS NA:RW02L_RDHOT:ELLBC		4E (+- 250/+125)	N35° 03' 21.00"	W119° 47' 09.00"	4616.14	true	P	2000.0		6817	6816.14	12-Apr-2016 12:27:41
ELLBC	GOONA	TerrainPt_1_RDHOT:PCIFC:KSN A:RW02L_ELLBC:GOONA		4E (+- 250/+125)	N34° 37' 54.00"	W119° 16' 54.00"	7496.72	true	P	2000.0		9697	9696.72	12-Apr-2016 12:27:41
GOONA	GUDBY	TerrainPt_15_GOONA:PCIFC:KS NA:RW02L_GOONA:GUDBY		4E (+- 250/+125)	N34° 37' 51.00"	W119° 16' 54.00"	7496.72	true	P	2000.0		9697	9696.72	12-Apr-2016 12:27:41
GUDBY	YORBS	TerrainPt_34_GOONA:PCIFC:KS NA:RW02L_GUDBY:YORBS		4E (+- 250/+125)	N34° 30' 36.00"	W119° 04' 33.00"	6702.76	true	P	2000.0		8903	8902.76	12-Apr-2016 12:27:41
YORBS	PCIFC	TerrainPt_15_GOONA:PCIFC:KS NA:RW02L_YORBS:PCIFC		4E (+- 250/+125)	N34° 27' 30.00"	W119° 00' 33.00"	5000.0	true	P	2000.0		7200	7200.0	12-Apr-2016 12:27:41
PCIFC	CRAYN	TerrainPt_17_GOONA:PCIFC:KS NA:RW02L_PCIFC:CRAYN		4E (+- 250/+125)	N34° 05' 06.00"	W118° 47' 09.00"	2824.8	true	P	2000.0		5025	5024.8	12-Apr-2016 12:27:41
CRAYN	SIPPP	TerrainPt_0_GOONA:PCIFC:KS NA:RW02L_CRAYN:SIPPP		4E (+- 250/+125)	N34° 05' 06.00"	W118° 47' 09.00"	2824.8	true	P	2000.0		5025	5024.8	12-Apr-2016 12:27:41
SIPPP	TANDY	NONE					-1.0	false	S					N/A
TANDY	OHSEA	NONE					-1.0	false	S					N/A
OHSEA	STYFF	TerrainPt_5_GOONA:PCIFC:KS NA:RW02L_OHSEA:STYFF		4E (+- 250/+125)	N33° 27' 36.00"	W118° 34' 09.00"	1807.74	true	S	1023.21		3031	3030.95	12-Apr-2016 12:27:41
STYFF	JJAWS	TerrainPt_28_GOONA:PCIFC:KS NA:RW02L_STYFF:JJAWS		4E (+- 250/+125)	N33° 26' 45.00"	W118° 32' 36.00"	1778.22	true	S	1018.73		2997	2996.94	12-Apr-2016 12:27:41
JJAWS	PUZZL	NONE					-1.0	false	S					N/A
PUZZL	MINOE	NONE					-1.0	false	S					N/A

RDHOT:PCIFC:KSNA:RW02L Criteria Failures

No failures.

Route Evaluation for RDHOT:PCIFC:KSNA:RW20R

RDHOT:PCIFC:KSNA:RW20R Evaluation Results Part 1/2

Leg Tp	End Pt	Turn Tp	Alt Restr	Alt Restr 2	Spd Restr	Turn Ang	Leg Length	Min Seg Length
IF	RDHOT						0.0	0.0
TF	ELLBC	FLY_BY				5.83	40.9	1.0
TF	GOONA	FLY_BY	+30000.0			0.26	36.21	1.0
TF	GUDBY	FLY_BY	+28000.0			0.76	10.83	1.0
TF	YORBS	FLY_BY	+25000.0		280.0	0.45	8.62	1.0
TF	PCIFC	FLY_BY	+21000.0			25.13	14.26	9.13
TF	CRAYN	FLY_BY	+17000.0			0.31	9.53	9.13
TF	SIPPP	FLY_BY	+14000.0			0.0	10.64	1.0
TF	TANDY	FLY_BY	+13000.0	-14000.0		1.36	10.22	1.0
TF	OHSEA	FLY_BY				41.08	9.4	2.41
TF	STYFF	FLY_BY	-9000.0			30.85	8.28	4.27
TF	KAYNN	FLY_BY	-7000.0			22.75	6.71	3.6
TF	LAXBB	FLY_BY	5000.0			12.83	8.27	3.36
TF	KLEVR	FLY_BY	5000.0			28.55	13.96	3.23
TF	BHEAR	FLY_OVER					7.26	1.62
FM							0.0	0.0

RDHOT:PCIFC:KSNA:RW20R Evaluation Results Part 2/2

Leg Tp	End Pt	Turn Tp	DTA1	DTA1 Turn Rad	DTA1 Turn Alt	DTA1 Turn Spd	DTA1 Bank Ang	DTA1 Tailwind	DTA1 True Airspd	DTA1 vGround	DTA2	DTA2 Turn Rad	DTA2 Turn Alt	DTA2 Turn Spd	DTA2 Bank Ang	DTA2 Tailwind	DTA2 True Airspd	DTA2 vGround
IF	RDHOT				0.0	0.0							0.0	0.0				
TF	ELLBC	FLY_BY	0.0		41000.0	300.0	0.0	128.0	629.0	570.0	2.76	54.11	39758.27	300.0	5.0	126.0	613.0	570.0
TF	GOONA	FLY_BY	2.76	54.11	39758.27	300.0	5.0	126.0	613.0	570.0	0.12	54.11	30706.85	300.0	5.0	108.0	513.0	570.0
TF	GUDBY	FLY_BY	0.12	54.11	30706.85	300.0	5.0	108.0	513.0	570.0	0.35	53.17	28000.0	300.0	5.0	102.0	488.0	565.0
TF	YORBS	FLY_BY	0.35	53.17	28000.0	300.0	5.0	102.0	488.0	565.0	0.19	47.85	25000.0	280.0	5.0	96.0	431.0	536.0
TF	PCIFC	FLY_BY	0.19	47.85	25000.0	280.0	5.0	96.0	431.0	536.0	9.13	40.98	21000.0	280.0	5.0	89.0	402.0	496.0
TF	CRAYN	FLY_BY	9.13	40.98	21000.0	280.0	5.0	89.0	402.0	496.0	0.5	182.07	18312.0	280.0	1.0	83.0	384.0	467.0
TF	SIPPP	FLY_BY	0.5	182.07	18312.0	280.0	1.0	83.0	384.0	467.0	0.0		15652.91	280.0	0.0	78.0	367.0	445.0
TF	TANDY	FLY_BY	0.0		15652.91	280.0	0.0	78.0	367.0	445.0	1.8	150.79	13097.33	280.0	1.0	73.0	352.0	425.0
TF	OHSEA	FLY_BY	1.8	150.79	13097.33	280.0	1.0	73.0	352.0	425.0	2.41	6.44	10747.58	280.0	20.54	68.0	339.0	407.0
TF	STYFF	FLY_BY	2.41	6.44	10747.58	280.0	20.54	68.0	339.0	407.0	1.86	6.73	8676.71	250.0	15.42	64.0	293.0	357.0
TF	KAYNN	FLY_BY	1.86	6.73	8676.71	250.0	15.42	64.0	293.0	357.0	1.74	8.67	7000.0	250.0	11.38	61.0	285.0	346.0
TF	LAXBB	FLY_BY	1.74	8.67	7000.0	250.0	11.38	61.0	285.0	346.0	1.62	14.37	5000.0	250.0	6.42	57.0	276.0	333.0
TF	KLEVR	FLY_BY	1.62	14.37	5000.0	250.0	6.42	57.0	276.0	333.0	1.62	6.35	5000.0	250.0	14.27	57.0	276.0	333.0
TF	BHEAR	FLY_OVER	1.62	6.35	5000.0	250.0	14.27	57.0	276.0	333.0	0.0		5000.0	250.0	0.0	57.0	276.0	333.0
FM			0.0		5000.0	250.0	0.0	57.0	276.0	333.0			0.0	0.0				

RDHOT:PCIFC:KSNA:RW20R Obstacle Evaluation

Start Pt	End Pt	Name	Source	AC (H/V) (ft) AMSL)	Lat	Long	Height (ft) AMSL	Mnts Area	Pri/Sec Area	ROC (ft)	WCVH (ft)	MOCA (ft)	Min OCS Alt (ft)	Date
RDHOT	ELLBC	TerrainPt_10_RDHOT:PCIFC:KSNA:RW02L_RDHOT:ELLBC		4E (+-250/+125)	N35° 03' 21.00"	W119° 47' 09.00"	4616.14	true	P	2000.0		6817	6816.14	12-Apr-2016 12:27:41
ELLBC	GOONA	TerrainPt_1_RDHOT:PCIFC:KSNA:RW02L_ELLBC:GOONA		4E (+-250/+125)	N34° 37' 54.00"	W119° 16' 54.00"	7496.72	true	P	2000.0		9697	9696.72	12-Apr-2016 12:27:41
GOONA	GUDBY	TerrainPt_15_GOONA:PCIFC:KSNA:RW02L_GOONA:GUDBY		4E (+-250/+125)	N34° 37' 51.00"	W119° 16' 54.00"	7496.72	true	P	2000.0		9697	9696.72	12-Apr-2016 12:27:41
GUDBY	YORBS	TerrainPt_34_GOONA:PCIFC:KSNA:RW02L_GUDBY:YORBS		4E (+-250/+125)	N34° 30' 36.00"	W119° 04' 33.00"	6702.76	true	P	2000.0		8903	8902.76	12-Apr-2016 12:27:41
YORBS	PCIFC	TerrainPt_15_GOONA:PCIFC:KSNA:RW02L_YORBS:PCIFC		4E (+-250/+125)	N34° 27' 30.00"	W119° 00' 33.00"	5000.0	true	P	2000.0		7200	7200.0	12-Apr-2016 12:27:41
PCIFC	CRAYN	TerrainPt_17_GOONA:PCIFC:KSNA:RW02L_PCIFC:CRAYN		4E (+-250/+125)	N34° 05' 06.00"	W118° 47' 09.00"	2824.8	true	P	2000.0		5025	5024.8	12-Apr-2016 12:27:41
CRAYN	SIPPP	TerrainPt_0_GOONA:PCIFC:KSNA:RW02L_CRAYN:SIPPP		4E (+-250/+125)	N34° 05' 06.00"	W118° 47' 09.00"	2824.8	true	P	2000.0		5025	5024.8	12-Apr-2016 12:27:41
SIPPP	TANDY	NONE					-1.0	false	S					N/A
TANDY	OHSEA	NONE					-1.0	false	S					N/A
OHSEA	STYFF	TerrainPt_5_GOONA:PCIFC:KSNA:RW02L_OHSEA:STYFF		4E (+-250/+125)	N33° 27' 36.00"	W118° 34' 09.00"	1807.74	true	S	1023.21		3031	3030.95	12-Apr-2016 12:27:41
STYFF	KAYNN	TerrainPt_2_GOONA:PCIFC:KSNA:RW20R_STYFF:KAYNN		4E (+-250/+125)	N33° 26' 39.00"	W118° 32' 09.00"	1535.43	true	S	1048.28		2784	2783.71	12-Apr-2016 12:27:41
KAYNN	LAXBB	NONE					-1.0	false	S					N/A
LAXBB	KLEVR	TerrainPt_36_GOONA:PCIFC:KSNA:RW20R_LAXBB:KLEVR		4E (+-250/+125)	N33° 40' 57.00"	W118° 00' 21.00"	131.23	true	P	2000.0		2332	2331.23	12-Apr-2016 12:27:41
KLEVR	BHEAR	TerrainPt_48_GOONA:PCIFC:KSNA:RW20R_KLEVR:BHEAR		4E (+-250/+125)	N33° 49' 54.00"	W117° 49' 57.00"	410.1	true	P	2000.0		2611	2610.1	12-Apr-2016 12:27:41

RDHOT:PCIFC:KSNA:RW20R Criteria Failures

No failures.

Route Evaluation for REBRG:PCIFC:KSNA:RW02L

REBRG:PCIFC:KSNA:RW02L Evaluation Results Part 1/2

Leg Tp	End Pt	Turn Tp	Alt Restr	Alt Restr 2	Spd Restr	Turn Ang	Leg Length	Min Seg Length
IF	REBRG						0.0	0.0
TF	MMTLY	FLY_BY				33.73	19.63	16.4
TF	REESR	FLY_BY	+30000.0			3.68	60.53	16.4
TF	RCHEL	FLY_BY	+28000.0			0.52	10.78	1.0
TF	SHOLN	FLY_BY	+25000.0		280.0	0.71	8.8	1.0
TF	PCIFC	FLY_BY	+21000.0			10.54	14.93	3.78
TF	CRAYN	FLY_BY	+17000.0			0.31	9.53	3.78
TF	SIPPP	FLY_BY	+14000.0			0.0	10.64	1.0
TF	TANDY	FLY_BY	+13000.0	-14000.0		1.36	10.22	1.0
TF	OHSEA	FLY_BY				41.08	9.4	2.45
TF	STYFF	FLY_BY	-9000.0			0.01	8.28	2.45
TF	JJAWS	FLY_BY	-6000.0			19.15	13.65	1.69
TF	PUZZL	FLY_BY				74.94	8.69	4.39
TF	MINOE	FLY_BY	+3000.0		210.0	0.88	9.53	2.71

REBRG:PCIFC:KSNA:RW02L Evaluation Results Part 2/2

Leg Tp	End Pt	Turn Tp	DTA1	DTA1 Turn Rad	DTA1 Turn Alt	DTA1 Turn Spd	DTA1 Bank Ang	DTA1 Tailwind	DTA1 True Airspd	DTA1 vGround	DTA2	DTA2 Turn Rad	DTA2 Turn Alt	DTA2 Turn Spd	DTA2 Bank Ang	DTA2 Tailwind	DTA2 True Airspd	DTA2 vGround
IF	REBRG				0.0	0.0							0.0	0.0				
TF	MMTLY	FLY_BY	0.0		41000.0	300.0	0.0	128.0	629.0	570.0	16.4	54.11	41000.0	300.0	5.0	128.0	629.0	570.0
TF	REESR	FLY_BY	16.4	54.11	41000.0	300.0	5.0	128.0	629.0	570.0	1.74	54.11	30695.57	300.0	5.0	108.0	513.0	570.0
TF	RCHEL	FLY_BY	1.74	54.11	30695.57	300.0	5.0	108.0	513.0	570.0	0.24	53.17	28000.0	300.0	5.0	102.0	488.0	565.0
TF	SHOLN	FLY_BY	0.24	53.17	28000.0	300.0	5.0	102.0	488.0	565.0	0.3	47.85	25000.0	280.0	5.0	96.0	431.0	536.0
TF	PCIFC	FLY_BY	0.3	47.85	25000.0	280.0	5.0	96.0	431.0	536.0	3.78	40.98	21017.86	280.0	5.0	89.0	402.0	496.0
TF	CRAYN	FLY_BY	3.78	40.98	21017.86	280.0	5.0	89.0	402.0	496.0	0.5	184.41	18635.29	280.0	1.0	84.0	386.0	470.0
TF	SIPPP	FLY_BY	0.5	184.41	18635.29	280.0	1.0	84.0	386.0	470.0	0.0		15976.19	280.0	0.0	79.0	369.0	448.0
TF	TANDY	FLY_BY	0.0		15976.19	280.0	0.0	79.0	369.0	448.0	1.82	152.93	13420.61	280.0	1.0	74.0	354.0	428.0
TF	OHSEA	FLY_BY	1.82	152.93	13420.61	280.0	1.0	74.0	354.0	428.0	2.45	6.54	11070.87	280.0	20.54	69.0	341.0	410.0
TF	STYFF	FLY_BY	2.45	6.54	11070.87	280.0	20.54	69.0	341.0	410.0	0.0		9000.0	250.0	0.0	65.0	294.0	359.0
TF	JJAWS	FLY_BY	0.0		9000.0	250.0	0.0	65.0	294.0	359.0	1.69	9.99	6000.0	250.0	9.57	59.0	281.0	340.0
TF	PUZZL	FLY_BY	1.69	9.99	6000.0	250.0	9.57	59.0	281.0	340.0	2.71	3.53	5383.31	250.0	25.0	58.0	278.0	336.0
TF	MINOE	FLY_BY	2.71	3.53	5383.31	250.0	25.0	58.0	278.0	336.0	0.49	64.52	3000.0	210.0	1.0	53.0	225.0	278.0

OHSEA RNAV

REBRG:PCIFC:KSNA:RW02L Obstacle Evaluation

Start Pt	End Pt	Name	Source	AC (H/V (ft) AMSL)	Lat	Long	Height (ft) AMSL	Mnts Area	Pri/Sec Area	ROC (ft)	WCVH (ft)	MOCA (ft)	Min OCS Alt (ft)	Date
REBRG	MMTLY	TerrainPt_39_REBRG:PCIFC:KS NA:RW02L_REBRG:MMTLY		4E (+- 250/+125)	N35° 38' 57.00"	W119° 45' 27.00"	465.88	true	P	2000.0		2666	2665.88	12-Apr-2016 12:27:41
MMTLY	REESR	TerrainPt_6_REBRG:PCIFC:KSN A:RW02L_MMTLY:REESR		4E (+- 250/+125)	N34° 48' 48.00"	W119° 10' 03.00"	8815.62	true	P	2000.0		11016	11015.62	12-Apr-2016 12:27:42
REESR	RCHEL	TerrainPt_47_REESR:PCIFC:KS NA:RW02L_REESR:RCHEL		4E (+- 250/+125)	N34° 48' 48.00"	W119° 10' 03.00"	8815.62	true	P	2000.0		11016	11015.62	12-Apr-2016 12:27:42
RCHEL	SHOLN	TerrainPt_34_REBRG:PCIFC:KS NA:RW02L_RCHEL:SHOLN		4E (+- 250/+125)	N34° 30' 36.00"	W119° 04' 33.00"	6702.76	true	P	2000.0		8903	8902.76	12-Apr-2016 12:27:42
SHOLN	PCIFC	TerrainPt_11_REBRG:PCIFC:KS NA:RW02L_SHOLN:PCIFC		4E (+- 250/+125)	N34° 28' 09.00"	W119° 01' 27.00"	5045.93	true	P	2000.0		7246	7245.93	12-Apr-2016 12:27:42
PCIFC	CRAYN	TerrainPt_17_GOONA:PCIFC:KS NA:RW02L_PCIFC:CRAYN		4E (+- 250/+125)	N34° 05' 06.00"	W118° 47' 09.00"	2824.8	true	P	2000.0		5025	5024.8	12-Apr-2016 12:27:41
CRAYN	SIPPP	TerrainPt_0_GOONA:PCIFC:KS NA:RW02L_CRAYN:SIPPP		4E (+- 250/+125)	N34° 05' 06.00"	W118° 47' 09.00"	2824.8	true	P	2000.0		5025	5024.8	12-Apr-2016 12:27:41
SIPPP	TANDY	NONE					-1.0	false	S					N/A
TANDY	OHSEA	NONE					-1.0	false	S					N/A
OHSEA	STYFF	TerrainPt_5_GOONA:PCIFC:KS NA:RW02L_OHSEA:STYFF		4E (+- 250/+125)	N33° 27' 36.00"	W118° 34' 09.00"	1807.74	true	S	1023.21		3031	3030.95	12-Apr-2016 12:27:41
STYFF	JJAWS	TerrainPt_28_GOONA:PCIFC:KS NA:RW02L_STYFF:JJAWS		4E (+- 250/+125)	N33° 26' 45.00"	W118° 32' 36.00"	1778.22	true	S	1018.73		2997	2996.94	12-Apr-2016 12:27:41
JJAWS	PUZZL	NONE					-1.0	false	S					N/A
PUZZL	MINOE	NONE					-1.0	false	S					N/A

REBRG:PCIFC:KSNA:RW02L Criteria Failures

No failures.

Route Evaluation for REBRG:PCIFC:KSNA:RW20R

REBRG:PCIFC:KSNA:RW20R Evaluation Results Part 1/2

Leg Tp	End Pt	Turn Tp	Alt Restr	Alt Restr 2	Spd Restr	Turn Ang	Leg Length	Min Seg Length
IF	REBRG						0.0	0.0
TF	MMTLY	FLY_BY				33.73	19.63	16.4
TF	REESR	FLY_BY	+30000.0			3.68	60.53	16.4
TF	RCHEL	FLY_BY	+28000.0			0.52	10.78	1.0
TF	SHOLN	FLY_BY	+25000.0		280.0	0.71	8.8	1.0
TF	PCIFC	FLY_BY	+21000.0			10.54	14.93	3.78
TF	CRAYN	FLY_BY	+17000.0			0.31	9.53	3.78
TF	SIPPP	FLY_BY	+14000.0			0.0	10.64	1.0
TF	TANDY	FLY_BY	+13000.0	-14000.0		1.36	10.22	1.0
TF	OHSEA	FLY_BY				41.08	9.4	2.41
TF	STYFF	FLY_BY	-9000.0			30.85	8.28	4.27
TF	KAYNN	FLY_BY	-7000.0			22.75	6.71	3.6
TF	LAXBB	FLY_BY	5000.0			12.83	8.27	3.36
TF	KLEVR	FLY_BY	5000.0			28.55	13.96	3.23
TF	BHEAR	FLY_OVER					7.26	1.62
FM							0.0	0.0

REBRG:PCIFC:KSNA:RW20R Evaluation Results Part 2/2

Leg Tp	End Pt	Turn Tp	DTA1	DTA1 Turn Rad	DTA1 Turn Alt	DTA1 Turn Spd	DTA1 Bank Ang	DTA1 Tailwind	DTA1 True Airspd	DTA1 vGround	DTA2	DTA2 Turn Rad	DTA2 Turn Alt	DTA2 Turn Spd	DTA2 Bank Ang	DTA2 Tailwind	DTA2 True Airspd	DTA2 vGround
IF	REBRG				0.0	0.0							0.0	0.0				
TF	MMTLY	FLY_BY	0.0		41000.0	300.0	0.0	128.0	629.0	570.0	16.4	54.11	41000.0	300.0	5.0	128.0	629.0	570.0
TF	REESR	FLY_BY	16.4	54.11	41000.0	300.0	5.0	128.0	629.0	570.0	1.74	54.11	30695.57	300.0	5.0	108.0	513.0	570.0
TF	RCHEL	FLY_BY	1.74	54.11	30695.57	300.0	5.0	108.0	513.0	570.0	0.24	53.17	28000.0	300.0	5.0	102.0	488.0	565.0
TF	SHOLN	FLY_BY	0.24	53.17	28000.0	300.0	5.0	102.0	488.0	565.0	0.3	47.85	25000.0	280.0	5.0	96.0	431.0	536.0
TF	PCIFC	FLY_BY	0.3	47.85	25000.0	280.0	5.0	96.0	431.0	536.0	3.78	40.98	21000.0	280.0	5.0	89.0	402.0	496.0
TF	CRAYN	FLY_BY	3.78	40.98	21000.0	280.0	5.0	89.0	402.0	496.0	0.5	182.07	18312.0	280.0	1.0	83.0	384.0	467.0
TF	SIPPP	FLY_BY	0.5	182.07	18312.0	280.0	1.0	83.0	384.0	467.0	0.0		15652.91	280.0	0.0	78.0	367.0	445.0
TF	TANDY	FLY_BY	0.0		15652.91	280.0	0.0	78.0	367.0	445.0	1.8	150.79	13097.33	280.0	1.0	73.0	352.0	425.0
TF	OHSEA	FLY_BY	1.8	150.79	13097.33	280.0	1.0	73.0	352.0	425.0	2.41	6.44	10747.58	280.0	20.54	68.0	339.0	407.0
TF	STYFF	FLY_BY	2.41	6.44	10747.58	280.0	20.54	68.0	339.0	407.0	1.86	6.73	8676.71	250.0	15.42	64.0	293.0	357.0
TF	KAYNN	FLY_BY	1.86	6.73	8676.71	250.0	15.42	64.0	293.0	357.0	1.74	8.67	7000.0	250.0	11.38	61.0	285.0	346.0
TF	LAXBB	FLY_BY	1.74	8.67	7000.0	250.0	11.38	61.0	285.0	346.0	1.62	14.37	5000.0	250.0	6.42	57.0	276.0	333.0
TF	KLEVR	FLY_BY	1.62	14.37	5000.0	250.0	6.42	57.0	276.0	333.0	1.62	6.35	5000.0	250.0	14.27	57.0	276.0	333.0
TF	BHEAR	FLY_OVER	1.62	6.35	5000.0	250.0	14.27	57.0	276.0	333.0	0.0		5000.0	250.0	0.0	57.0	276.0	333.0
FM			0.0		5000.0	250.0	0.0	57.0	276.0	333.0			0.0	0.0				

REBRG:PCIFC:KSNA:RW20R Obstacle Evaluation

Start Pt	End Pt	Name	Source	AC (H/V (ft) AMSL)	Lat	Long	Height (ft) AMSL	Mnts Area	Pri/Sec Area	ROC (ft)	WCVH (ft)	MOCA (ft)	Min OCS Alt (ft)	Date
REBRG	MMTLY	TerrainPt_39_REBRG:PCIFC:KS NA:RW02L_REBRG:MMTLY		4E (+- 250/+125)	N35° 38' 57.00"	W119° 45' 27.00"	465.88	true	P	2000.0		2666	2665.88	12-Apr-2016 12:27:41
MMTLY	REESR	TerrainPt_6_REBRG:PCIFC:KSN A:RW02L_MMTLY:REESR		4E (+- 250/+125)	N34° 48' 48.00"	W119° 10' 03.00"	8815.62	true	P	2000.0		11016	11015.62	12-Apr-2016 12:27:42
REESR	RCHEL	TerrainPt_47_REESR:PCIFC:KS NA:RW02L_REESR:RCHEL		4E (+- 250/+125)	N34° 48' 48.00"	W119° 10' 03.00"	8815.62	true	P	2000.0		11016	11015.62	12-Apr-2016 12:27:42
RCHEL	SHOLN	TerrainPt_34_REBRG:PCIFC:KS NA:RW02L_RCHEL:SHOLN		4E (+- 250/+125)	N34° 30' 36.00"	W119° 04' 33.00"	6702.76	true	P	2000.0		8903	8902.76	12-Apr-2016 12:27:42
SHOLN	PCIFC	TerrainPt_11_REBRG:PCIFC:KS NA:RW02L_SHOLN:PCIFC		4E (+- 250/+125)	N34° 28' 09.00"	W119° 01' 27.00"	5045.93	true	P	2000.0		7246	7245.93	12-Apr-2016 12:27:42
PCIFC	CRAYN	TerrainPt_17_GOONA:PCIFC:KS NA:RW02L_PCIFC:CRAYN		4E (+- 250/+125)	N34° 05' 06.00"	W118° 47' 09.00"	2824.8	true	P	2000.0		5025	5024.8	12-Apr-2016 12:27:41
CRAYN	SIPPP	TerrainPt_0_GOONA:PCIFC:KS NA:RW02L_CRAYN:SIPPP		4E (+- 250/+125)	N34° 05' 06.00"	W118° 47' 09.00"	2824.8	true	P	2000.0		5025	5024.8	12-Apr-2016 12:27:41
SIPPP	TANDY	NONE					-1.0	false	S					N/A
TANDY	OHSEA	NONE					-1.0	false	S					N/A
OHSEA	STYFF	TerrainPt_5_GOONA:PCIFC:KS NA:RW02L_OHSEA:STYFF		4E (+- 250/+125)	N33° 27' 36.00"	W118° 34' 09.00"	1807.74	true	S	1023.21		3031	3030.95	12-Apr-2016 12:27:41
STYFF	KAYNN	TerrainPt_2_GOONA:PCIFC:KS NA:RW20R_STYFF:KAYNN		4E (+- 250/+125)	N33° 26' 39.00"	W118° 32' 09.00"	1535.43	true	S	1048.28		2784	2783.71	12-Apr-2016 12:27:41
KAYNN	LAXBB	NONE					-1.0	false	S					N/A
LAXBB	KLEVR	TerrainPt_36_GOONA:PCIFC:KS NA:RW20R_LAXBB:KLEVR		4E (+- 250/+125)	N33° 40' 57.00"	W118° 00' 21.00"	131.23	true	P	2000.0		2332	2331.23	12-Apr-2016 12:27:41
KLEVR	BHEAR	TerrainPt_48_GOONA:PCIFC:KS NA:RW20R_KLEVR:BHEAR		4E (+- 250/+125)	N33° 49' 54.00"	W117° 49' 57.00"	410.1	true	P	2000.0		2611	2610.1	12-Apr-2016 12:27:41

REBRG:PCIFC:KSNA:RW20R Criteria Failures

No failures.

Route Evaluation for REESR:PCIFC:KSNA:RW02L

REESR:PCIFC:KSNA:RW02L Evaluation Results Part 1/2

Leg Tp	End Pt	Turn Tp	Alt Restr	Alt Restr 2	Spd Restr	Turn Ang	Leg Length	Min Seg Length
IF	REESR		+30000.0				0.0	0.0
TF	RCHEL	FLY_BY	+28000.0			0.52	10.78	1.0
TF	SHOLN	FLY_BY	+25000.0		280.0	0.71	8.8	1.0
TF	PCIFC	FLY_BY	+21000.0			10.54	14.93	3.78
TF	CRAYN	FLY_BY	+17000.0			0.31	9.53	3.78
TF	SIPPP	FLY_BY	+14000.0			0.0	10.64	1.0
TF	TANDY	FLY_BY	+13000.0	-14000.0		1.36	10.22	1.0
TF	OHSEA	FLY_BY				41.08	9.4	2.45
TF	STYFF	FLY_BY	-9000.0			0.01	8.28	2.45
TF	JJAWS	FLY_BY	-6000.0			19.15	13.65	1.69
TF	PUZZL	FLY_BY				74.94	8.69	4.39
TF	MINOE	FLY_BY	+3000.0		210.0	0.88	9.53	2.71

REESR:PCIFC:KSNA:RW02L Evaluation Results Part 2/2

Leg Tp	End Pt	Turn Tp	DTA1	DTA1 Turn Rad	DTA1 Turn Alt	DTA1 Turn Spd	DTA1 Bank Ang	DTA1 Tailwind	DTA1 True Airspd	DTA1 vGround	DTA2	DTA2 Turn Rad	DTA2 Turn Alt	DTA2 Turn Spd	DTA2 Bank Ang	DTA2 Tailwind	DTA2 True Airspd	DTA2 vGround
IF	REESR				0.0	0.0							0.0	0.0				
TF	RCHEL	FLY_BY	0.0		30695.57	300.0	0.0	108.0	513.0	570.0	0.24	53.17	28000.0	300.0	5.0	102.0	488.0	565.0
TF	SHOLN	FLY_BY	0.24	53.17	28000.0	300.0	5.0	102.0	488.0	565.0	0.3	47.85	25000.0	280.0	5.0	96.0	431.0	536.0
TF	PCIFC	FLY_BY	0.3	47.85	25000.0	280.0	5.0	96.0	431.0	536.0	3.78	40.98	21017.86	280.0	5.0	89.0	402.0	496.0
TF	CRAYN	FLY_BY	3.78	40.98	21017.86	280.0	5.0	89.0	402.0	496.0	0.5	184.41	18635.29	280.0	1.0	84.0	386.0	470.0
TF	SIPPP	FLY_BY	0.5	184.41	18635.29	280.0	1.0	84.0	386.0	470.0	0.0		15976.19	280.0	0.0	79.0	369.0	448.0
TF	TANDY	FLY_BY	0.0		15976.19	280.0	0.0	79.0	369.0	448.0	1.82	152.93	13420.61	280.0	1.0	74.0	354.0	428.0
TF	OHSEA	FLY_BY	1.82	152.93	13420.61	280.0	1.0	74.0	354.0	428.0	2.45	6.54	11070.87	280.0	20.54	69.0	341.0	410.0
TF	STYFF	FLY_BY	2.45	6.54	11070.87	280.0	20.54	69.0	341.0	410.0	0.0		9000.0	250.0	0.0	65.0	294.0	359.0
TF	JJAWS	FLY_BY	0.0		9000.0	250.0	0.0	65.0	294.0	359.0	1.69	9.99	6000.0	250.0	9.57	59.0	281.0	340.0
TF	PUZZL	FLY_BY	1.69	9.99	6000.0	250.0	9.57	59.0	281.0	340.0	2.71	3.53	5383.31	250.0	25.0	58.0	278.0	336.0
TF	MINOE	FLY_BY	2.71	3.53	5383.31	250.0	25.0	58.0	278.0	336.0	0.49	64.52	3000.0	210.0	1.0	53.0	225.0	278.0

OHSEA RNAV

REESR:PCIFC:KSNA:RW02L Obstacle Evaluation

Start Pt	End Pt	Name	Source	AC (H/V (ft) AMSL)	Lat	Long	Height (ft) AMSL	Mnts Area	Pri/Sec Area	ROC (ft)	WCVH (ft)	MOCA (ft)	Min OCS Alt (ft)	Date
REESR	RCHEL	TerrainPt_47_REESR:PCIFC:KS NA:RW02L_REESR:RCHEL		4E (+- 250/+125)	N34° 48' 48.00"	W119° 10' 03.00"	8815.62	true	P	2000.0		11016	11015.62	12-Apr-2016 12:27:42
RCHEL	SHOLN	TerrainPt_34_REBRG:PCIFC:KS NA:RW02L_RCHEL:SHOLN		4E (+- 250/+125)	N34° 30' 36.00"	W119° 04' 33.00"	6702.76	true	P	2000.0		8903	8902.76	12-Apr-2016 12:27:42
SHOLN	PCIFC	TerrainPt_11_REBRG:PCIFC:KS NA:RW02L_SHOLN:PCIFC		4E (+- 250/+125)	N34° 28' 09.00"	W119° 01' 27.00"	5045.93	true	P	2000.0		7246	7245.93	12-Apr-2016 12:27:42
PCIFC	CRAYN	TerrainPt_17_GOONA:PCIFC:KS NA:RW02L_PCIFC:CRAYN		4E (+- 250/+125)	N34° 05' 06.00"	W118° 47' 09.00"	2824.8	true	P	2000.0		5025	5024.8	12-Apr-2016 12:27:41
CRAYN	SIPPP	TerrainPt_0_GOONA:PCIFC:KS NA:RW02L_CRAYN:SIPPP		4E (+- 250/+125)	N34° 05' 06.00"	W118° 47' 09.00"	2824.8	true	P	2000.0		5025	5024.8	12-Apr-2016 12:27:41
SIPPP	TANDY	NONE					-1.0	false	S					N/A
TANDY	OHSEA	NONE					-1.0	false	S					N/A
OHSEA	STYFF	TerrainPt_5_GOONA:PCIFC:KS NA:RW02L_OHSEA:STYFF		4E (+- 250/+125)	N33° 27' 36.00"	W118° 34' 09.00"	1807.74	true	S	1023.21		3031	3030.95	12-Apr-2016 12:27:41
STYFF	JJAWS	TerrainPt_28_GOONA:PCIFC:KS NA:RW02L_STYFF:JJAWS		4E (+- 250/+125)	N33° 26' 45.00"	W118° 32' 36.00"	1778.22	true	S	1018.73		2997	2996.94	12-Apr-2016 12:27:41
JJAWS	PUZZL	NONE					-1.0	false	S					N/A
PUZZL	MINOE	NONE					-1.0	false	S					N/A

REESR:PCIFC:KSNA:RW02L Criteria Failures

No failures.

Route Evaluation for REESR:PCIFC:KSNA:RW20R

REESR:PCIFC:KSNA:RW20R Evaluation Results Part 1/2

Leg Tp	End Pt	Turn Tp	Alt Restr	Alt Restr 2	Spd Restr	Turn Ang	Leg Length	Min Seg Length
IF	REESR		+30000.0				0.0	0.0
TF	RCHEL	FLY_BY	+28000.0			0.52	10.78	1.0
TF	SHOLN	FLY_BY	+25000.0		280.0	0.71	8.8	1.0
TF	PCIFC	FLY_BY	+21000.0			10.54	14.93	3.78
TF	CRAYN	FLY_BY	+17000.0			0.31	9.53	3.78
TF	SIPPP	FLY_BY	+14000.0			0.0	10.64	1.0
TF	TANDY	FLY_BY	+13000.0	-14000.0		1.36	10.22	1.0
TF	OHSEA	FLY_BY				41.08	9.4	2.41
TF	STYFF	FLY_BY	-9000.0			30.85	8.28	4.27
TF	KAYNN	FLY_BY	-7000.0			22.75	6.71	3.6
TF	LAXBB	FLY_BY	5000.0			12.83	8.27	3.36
TF	KLEVR	FLY_BY	5000.0			28.55	13.96	3.23
TF	BHEAR	FLY_OVER					7.26	1.62
FM							0.0	0.0

REESR:PCIFC:KSNA:RW20R Evaluation Results Part 2/2

Leg Tp	End Pt	Turn Tp	DTA1	DTA1 Turn Rad	DTA1 Turn Alt	DTA1 Turn Spd	DTA1 Bank Ang	DTA1 Tailwind	DTA1 True Airspd	DTA1 vGround	DTA2	DTA2 Turn Rad	DTA2 Turn Alt	DTA2 Turn Spd	DTA2 Bank Ang	DTA2 Tailwind	DTA2 True Airspd	DTA2 vGround
IF	REESR				0.0	0.0							0.0	0.0				
TF	RCHEL	FLY_BY	0.0		30695.57	300.0	0.0	108.0	513.0	570.0	0.24	53.17	28000.0	300.0	5.0	102.0	488.0	565.0
TF	SHOLN	FLY_BY	0.24	53.17	28000.0	300.0	5.0	102.0	488.0	565.0	0.3	47.85	25000.0	280.0	5.0	96.0	431.0	536.0
TF	PCIFC	FLY_BY	0.3	47.85	25000.0	280.0	5.0	96.0	431.0	536.0	3.78	40.98	21000.0	280.0	5.0	89.0	402.0	496.0
TF	CRAYN	FLY_BY	3.78	40.98	21000.0	280.0	5.0	89.0	402.0	496.0	0.5	182.07	18312.0	280.0	1.0	83.0	384.0	467.0
TF	SIPPP	FLY_BY	0.5	182.07	18312.0	280.0	1.0	83.0	384.0	467.0	0.0		15652.91	280.0	0.0	78.0	367.0	445.0
TF	TANDY	FLY_BY	0.0		15652.91	280.0	0.0	78.0	367.0	445.0	1.8	150.79	13097.33	280.0	1.0	73.0	352.0	425.0
TF	OHSEA	FLY_BY	1.8	150.79	13097.33	280.0	1.0	73.0	352.0	425.0	2.41	6.44	10747.58	280.0	20.54	68.0	339.0	407.0
TF	STYFF	FLY_BY	2.41	6.44	10747.58	280.0	20.54	68.0	339.0	407.0	1.86	6.73	8676.71	250.0	15.42	64.0	293.0	357.0
TF	KAYNN	FLY_BY	1.86	6.73	8676.71	250.0	15.42	64.0	293.0	357.0	1.74	8.67	7000.0	250.0	11.38	61.0	285.0	346.0
TF	LAXBB	FLY_BY	1.74	8.67	7000.0	250.0	11.38	61.0	285.0	346.0	1.62	14.37	5000.0	250.0	6.42	57.0	276.0	333.0
TF	KLEVR	FLY_BY	1.62	14.37	5000.0	250.0	6.42	57.0	276.0	333.0	1.62	6.35	5000.0	250.0	14.27	57.0	276.0	333.0
TF	BHEAR	FLY_OVER	1.62	6.35	5000.0	250.0	14.27	57.0	276.0	333.0	0.0		5000.0	250.0	0.0	57.0	276.0	333.0
FM			0.0		5000.0	250.0	0.0	57.0	276.0	333.0			0.0	0.0				

OHSEA RNAV

REESR:PCIFC:KSNA:RW20R Obstacle Evaluation

Start Pt	End Pt	Name	Source	AC (H/V) (ft) AMSL)	Lat	Long	Height (ft) AMSL	Mnts Area	Pri/Sec Area	ROC (ft)	WCVH (ft)	MOCA (ft)	Min OCS Alt (ft)	Date
REESR	RCHEL	TerrainPt_47_REESR:PCIFC:KS NA:RW02L_REESR:RCHEL		4E (+-250/+125)	N34° 48' 48.00"	W119° 10' 03.00"	8815.62	true	P	2000.0		11016	11015.62	12-Apr-2016 12:27:42
RCHEL	SHOLN	TerrainPt_34_REBRG:PCIFC:KS NA:RW02L_RCHEL:SHOLN		4E (+-250/+125)	N34° 30' 36.00"	W119° 04' 33.00"	6702.76	true	P	2000.0		8903	8902.76	12-Apr-2016 12:27:42
SHOLN	PCIFC	TerrainPt_11_REBRG:PCIFC:KS NA:RW02L_SHOLN:PCIFC		4E (+-250/+125)	N34° 28' 09.00"	W119° 01' 27.00"	5045.93	true	P	2000.0		7246	7245.93	12-Apr-2016 12:27:42
PCIFC	CRAYN	TerrainPt_17_GOONA:PCIFC:KS NA:RW02L_PCIFC:CRAYN		4E (+-250/+125)	N34° 05' 06.00"	W118° 47' 09.00"	2824.8	true	P	2000.0		5025	5024.8	12-Apr-2016 12:27:41
CRAYN	SIPPP	TerrainPt_0_GOONA:PCIFC:KS NA:RW02L_CRAYN:SIPPP		4E (+-250/+125)	N34° 05' 06.00"	W118° 47' 09.00"	2824.8	true	P	2000.0		5025	5024.8	12-Apr-2016 12:27:41
SIPPP	TANDY	NONE					-1.0	false	S					N/A
TANDY	OHSEA	NONE					-1.0	false	S					N/A
OHSEA	STYFF	TerrainPt_5_GOONA:PCIFC:KS NA:RW02L_OHSEA:STYFF		4E (+-250/+125)	N33° 27' 36.00"	W118° 34' 09.00"	1807.74	true	S	1023.21		3031	3030.95	12-Apr-2016 12:27:41
STYFF	KAYNN	TerrainPt_2_GOONA:PCIFC:KS NA:RW20R_STYFF:KAYNN		4E (+-250/+125)	N33° 26' 39.00"	W118° 32' 09.00"	1535.43	true	S	1048.28		2784	2783.71	12-Apr-2016 12:27:41
KAYNN	LAXBB	NONE					-1.0	false	S					N/A
LAXBB	KLEVR	TerrainPt_36_GOONA:PCIFC:KS NA:RW20R_LAXBB:KLEVR		4E (+-250/+125)	N33° 40' 57.00"	W118° 00' 21.00"	131.23	true	P	2000.0		2332	2331.23	12-Apr-2016 12:27:41
KLEVR	BHEAR	TerrainPt_48_GOONA:PCIFC:KS NA:RW20R_KLEVR:BHEAR		4E (+-250/+125)	N33° 49' 54.00"	W117° 49' 57.00"	410.1	true	P	2000.0		2611	2610.1	12-Apr-2016 12:27:41

REESR:PCIFC:KSNA:RW20R Criteria Failures

No failures.

Evaluation Input

Name:	RS Results PCIFC
Project:	SNA OHSEA STAR PAPERWORK_20150812 (210 MINOE)
Last evaluated:	12-Apr-2016 12:25:24
Evaluated obstacles?:	true
Obstacle Database:	AIRNAV2
Evaluated terrain?:	true
Worst Case Vegetation Height (ft) AGL:	0

Terrain Information

Terrain Extractor Name	Extractor Location	Extractor Type	Resolution
DTED 3 Sec	C:\Program Files (x86)\TARGETS\data\DTED-3Sec	org.mitre.caasd.terrain.DTEExtractor	3.0

Procedure Criteria Failures

No failures.

Evaluation Notes and Warnings

No failures.

Obstacles Requiring Accuracy Code Verification

None.

Database Effective Dates

Database	Date
UddfObstacle	03/09/2015
Tiled AIRNAV2	N/A
OEAAA	N/A
NFDC	03/31/2016
IFP_OFFLINE	N/A
AVNIS	04/12/2016
DOF	03/31/2016
AVNII_OFFLINE	N/A
AIRNAV2	04/12/2016
CIFP	03/31/2016

Notes:

Point obstacles with an elevation of 219 FT added to portions of the track over the Pacific Ocean per FPT instruction.