

SAN ECHHO SID_FINAL_SUBMITTED

Point Of Contact

Organization Name - Southern California Metroplex

POC's Name - Robert E. Henry-Metroplex Lead/Jose Gonzalez-NATCA Co-Lead

Telephone Number - (661) 265-8434

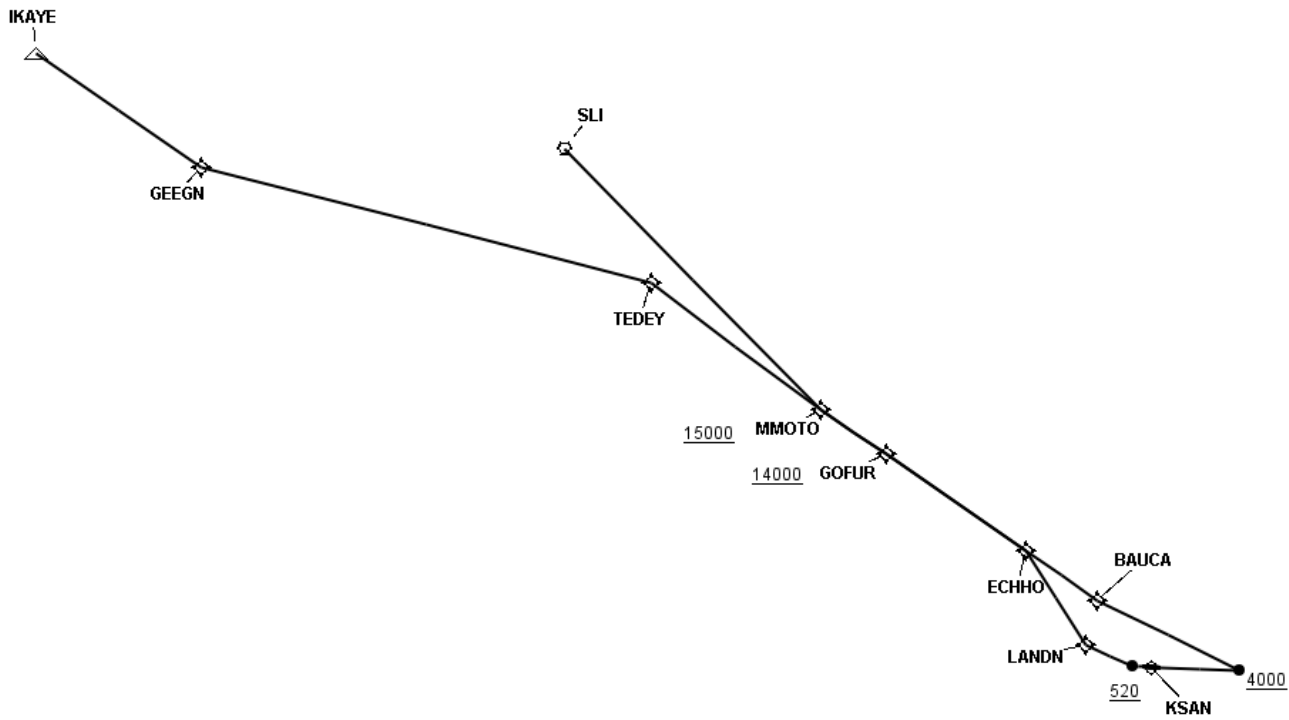
FAX Number - 661-265-8338

Email Address - Robert.Henry@faa.gov;Jose.J.Gonzalez@faa.gov

TARGETS Distribution Package

Version:5.0.4.1

Date: Wed Nov 18 12:41:04 EST 2015



SAN ECHHO SID_FINAL_SUBMITTED

Runway Transition Data - RW09

DB	End Point	Latitude (D° M' S.ss")	Longitude (D° M' S.ss")	FO/FB	Leg	TC	MC	Distance	Altitude	Speed	MEA	MOCA	Arc Center Lat (D° M' S.ss")	Arc Center Lon (D° M' S.ss")	Arc Radius (NM)
AVNIS	DER RW09	N32 43 48.01	W117 10 29.90												
					VA	105.99	94.99	7.97	+4000						
	BAUCA WP	N32 51 36.76	W117 15 38.05	FB	DF			15.60							
	ECHHO WP	N32 58 01.44	W117 22 23.40	FB	TF	318.40	307.40	8.56							

Runway Transition Data - RW27

DB	End Point	Latitude (D° M' S.ss")	Longitude (D° M' S.ss")	FO/FB	Leg	TC	MC	Distance	Altitude	Speed	MEA	MOCA	Arc Center Lat (D° M' S.ss")	Arc Center Lon (D° M' S.ss")	Arc Radius (NM)
AVNIS	DER RW27	N32 44 13.64	W117 12 15.68												
					VA	286.00	275.00	1.01	+520						
	LANDN WP	N32 47 37.02	W117 18 12.59	FB	DF			5.10							
	ECHHO WP	N32 58 01.44	W117 22 23.40	FB	TF	341.30	330.30	10.97							

En Route Transition Data - IKAYE

DB	End Point	Latitude (D° M' S.ss")	Longitude (D° M' S.ss")	FO/FB	Leg	TC	MC	Distance	Altitude	Speed	MEA	MOCA	Arc Center Lat (D° M' S.ss")	Arc Center Lon (D° M' S.ss")	Arc Radius (NM)
	ECHHO WP	N32 58 01.44	W117 22 23.40		IF										
	GOFUR WP	N33 10 29.72	W117 35 26.14	FB	TF	318.69	307.69	16.59	+14000		8500				
	MMOTO WP	N33 16 10.43	W117 41 42.94	FB	TF	317.12	306.12	7.74	+15000		12000				
	TEDEY WP	N33 32 15.25	W117 57 14.80	FB	TF	321.06	310.06	20.66			15000				
	GEEGN WP	N33 53 52.27	W118 45 08.16	FB	TF	298.60	287.60	45.40			16000				
AVNIS	IKAYE WP	N34 08 35.00	W119 00 37.00	FB	TF	318.85	307.85	19.53			16000				

En Route Transition Data - SLI

DB	End Point	Latitude (D° M' S.ss")	Longitude (D° M' S.ss")	FO/FB	Leg	TC	MC	Distance	Altitude	Speed	MEA	MOCA	Arc Center Lat (D° M' S.ss")	Arc Center Lon (D° M' S.ss")	Arc Radius (NM)
	ECHHO WP	N32 58 01.44	W117 22 23.40		IF										
	GOFUR WP	N33 10 29.72	W117 35 26.14	FB	TF	318.69	307.69	16.59	+14000		8500				
	MMOTO WP	N33 16 10.43	W117 41 42.94	FB	TF	317.12	306.12	7.74	+15000		12000				
AVNIS	SLI VORTAC	N33 46 59.87	W118 03 17.12	FB	TF	329.73	318.73	35.66			15000				

Waypoint Data

DB	Waypoint	Arc Center	Lat-Long (DMS.S)	Latitude (Deg)	Longitude (Deg)	Latitude (D°, M.mm')	Longitude (D°, M.mm')	Latitude (D° M' S.ss")	Longitude (D° M' S.ss")
	BAUCA WP		325136.76N-1171538.05W	N 32.8602114	W 117.2605685	N32 51.613	W117 15.634	N32 51 36.76	W117 15 38.05
	ECHHO WP		325801.44N-1172223.40W	N 32.9670668	W 117.3731674	N32 58.024	W117 22.390	N32 58 01.44	W117 22 23.40
	GEEGN WP		335352.27N-1184508.16W	N 33.8978516	W 118.7522656	N33 53.871	W118 45.136	N33 53 52.27	W118 45 08.16
	GOFUR WP		331029.72N-1173526.14W	N 33.1749222	W 117.5905938	N33 10.495	W117 35.436	N33 10 29.72	W117 35 26.14
AVNIS	IKAYE WP		340835.00N-1190037.00W	N 34.1430556	W 119.0102778	N34 08.583	W119 00.617	N34 08 35.00	W119 00 37.00
	LANDN WP		324737.02N-1171812.59W	N 32.7936167	W 117.3034972	N32 47.617	W117 18.210	N32 47 37.02	W117 18 12.59
	MMOTO WP		331610.43N-1174142.94W	N 33.2695648	W 117.6952625	N33 16.174	W117 41.716	N33 16 10.43	W117 41 42.94
AVNIS	SLI VORTAC		334659.87N-1180317.12W	N 33.7832972	W 118.0547556	N33 46.998	W118 03.285	N33 46 59.87	W118 03 17.12
	TEDEY WP		333215.25N-1175714.80W	N 33.5375696	W 117.9541122	N33 32.254	W117 57.247	N33 32 15.25	W117 57 14.80

No FAA checks included.

Database Effective Dates

Database	Date
UddfObstacle	N/A
Tiled AVNII	N/A
OEAAA	N/A
NFDC	N/A
IFP_OFFLINE	N/A
AVNIS	N/A
DOF	N/A
AVNII_OFFLINE	N/A
AVNII	N/A
CIFP	N/A

Notes: