

SKWRL

Point Of Contact

Organization Name - Southern California Metroplex

POC's Name - Robert E. Henry, SOCAL Metroplex Manager: Jose Gonzalez, SOCAL Metroplex NATCA CO-LEAD

Telephone Number - (661) 265-8434

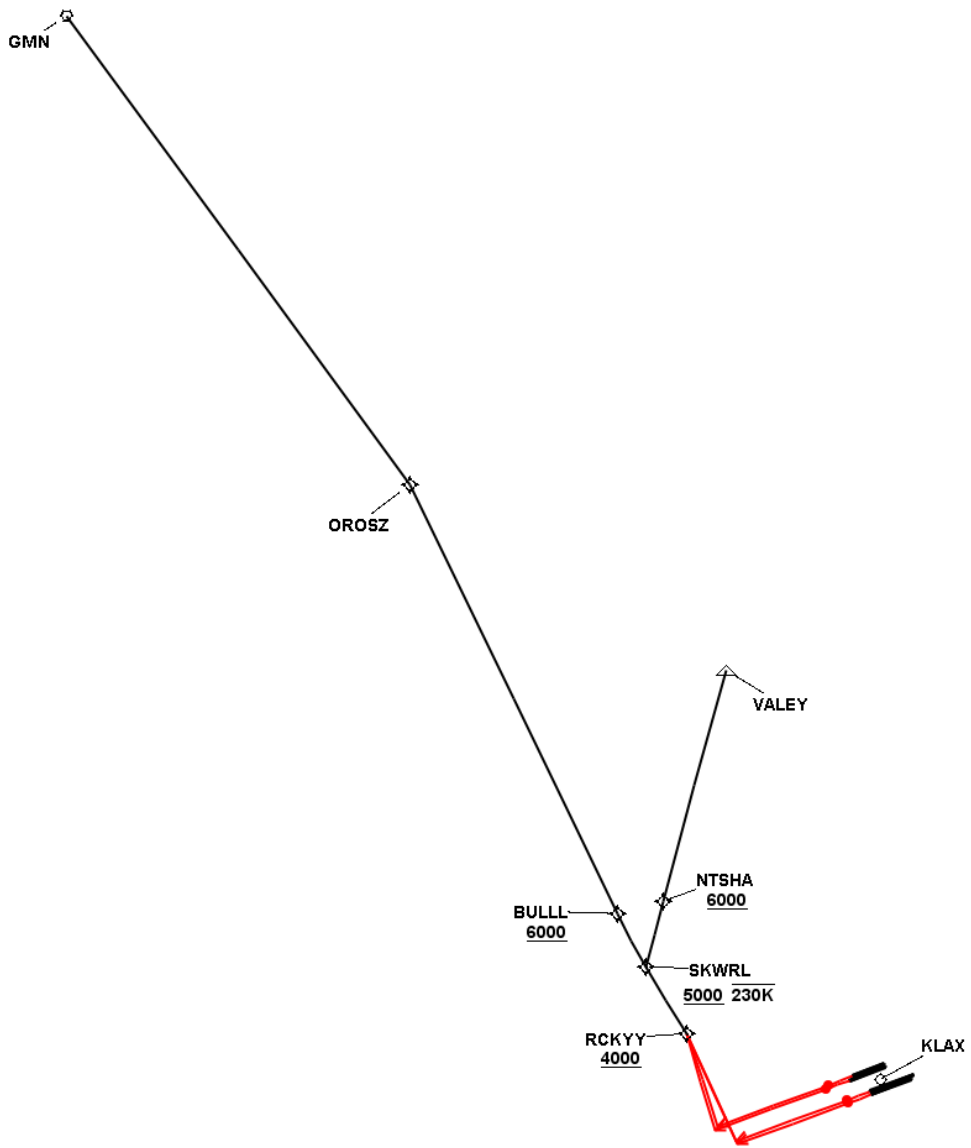
FAX Number - (661) 265-8338

Email Address - Robert.Henry@FAA.GOV; Jose.J.Gonzalez@FAA.GOV

TARGETS Distribution Package

Version:5.0.5.1

Date: Thu Apr 28 13:29:42 PDT 2016



SKWRL

Runway Transition Data - RW24L

DB	End Point	Latitude (D° M' S.ss")	Longitude (D° M' S.ss")	FO/FB	Leg	TC	MC	Distance	Altitude	Speed	MEA	MOCA	Arc Center Lat (D° M' S.ss")	Arc Center Lon (D° M' S.ss")	Arc Radius (NM)
AIRNA V2	DER RW24L	N33 56 48.53	W118 26 04.80												
					VA	263.00	251.00	1.06	+640						
					VM	263.00	251.00								
	RCKYY WP	N34 00 22.77	W118 33 31.90	FB	DF			4.31	+4000						

Runway Transition Data - RW24R

DB	End Point	Latitude (D° M' S.ss")	Longitude (D° M' S.ss")	FO/FB	Leg	TC	MC	Distance	Altitude	Speed	MEA	MOCA	Arc Center Lat (D° M' S.ss")	Arc Center Lon (D° M' S.ss")	Arc Radius (NM)
AVNIS	DER RW24R	N33 56 56.80	W118 25 52.18												
					VA	263.00	251.00	1.05	+640						
					VM	263.00	251.00								
	RCKYY WP	N34 00 22.77	W118 33 31.90	FB	DF			4.18	+4000						

Runway Transition Data - RW25L

DB	End Point	Latitude (D° M' S.ss")	Longitude (D° M' S.ss")	FO/FB	Leg	TC	MC	Distance	Altitude	Speed	MEA	MOCA	Arc Center Lat (D° M' S.ss")	Arc Center Lon (D° M' S.ss")	Arc Radius (NM)
AVNIS	DER RW25L	N33 56 01.14	W118 25 08.47												
					VA	263.01	251.01	1.04	+640						
					VM	263.00	251.00								
	RCKYY WP	N34 00 22.77	W118 33 31.90	FB	DF			5.19	+4000						

Runway Transition Data - RW25R

DB	End Point	Latitude (D° M' S.ss")	Longitude (D° M' S.ss")	FO/FB	Leg	TC	MC	Distance	Altitude	Speed	MEA	MOCA	Arc Center Lat (D° M' S.ss")	Arc Center Lon (D° M' S.ss")	Arc Radius (NM)
AVNIS	DER RW25R	N33 56 08.99	W118 25 09.63												
					VA	263.01	251.01	1.04	+640						
					VM	263.00	251.00								
	RCKYY WP	N34 00 22.77	W118 33 31.90	FB	DF			5.05	+4000						

Common Route Data - SKWRL CR

DB	End Point	Latitude (D° M' S.ss")	Longitude (D° M' S.ss")	FO/FB	Leg	TC	MC	Distance	Altitude	Speed	MEA	MOCA	Arc Center Lat (D° M' S.ss")	Arc Center Lon (D° M' S.ss")	Arc Radius (NM)
	RCKYY WP	N34 00 22.77	W118 33 31.90		IF				+4000						
	SKWRL WP	N34 03 29.58	W118 34 43.76	FB	TF	342.25	330.25	3.26	+5000	-230	4000				

SKWRL

En Route Transition Data - GMN

DB	End Point	Latitude (D° M' S.ss")	Longitude (D° M' S.ss")	FO/FB	Leg	TC	MC	Distance	Altitude	Speed	MEA	MOCA	Arc Center Lat (D° M' S.ss")	Arc Center Lon (D° M' S.ss")	Arc Radius (NM)
	SKWRL WP	N34 03 29.58	W118 34 43.76		IF				+5000	-230					
	BULLL WP	N34 05 59.12	W118 35 26.81	FB	TF	346.53	334.53	2.56	+6000		5000				
AVNIS	OROSZ WP	N34 25 36.18	W118 40 27.01	FB	TF	348.07	336.07	20.02			6000				
AVNIS	GMN VORTAC	N34 48 14.50	W118 51 40.90	FB	TF	337.75	325.75	24.43			10000				

En Route Transition Data - VALEY

DB	End Point	Latitude (D° M' S.ss")	Longitude (D° M' S.ss")	FO/FB	Leg	TC	MC	Distance	Altitude	Speed	MEA	MOCA	Arc Center Lat (D° M' S.ss")	Arc Center Lon (D° M' S.ss")	Arc Radius (NM)
	SKWRL WP	N34 03 29.58	W118 34 43.76		IF				+5000	-230					
	NTSHA WP	N34 06 01.74	W118 33 01.57	FB	TF	29.19	17.19	2.90	+6000		5000				
AVNIS	VALEY WP	N34 14 48.91	W118 27 06.60	FB	TF	29.21	17.21	10.05			5000				

Waypoint Data

DB	Waypoint	Arc Center	Lat-Long (DMS.S)	Latitude (Deg)	Longitude (Deg)	Latitude (D°, M.mm')	Longitude (D°, M.mm')	Latitude (D° M' S.ss")	Longitude (D° M' S.ss")
	BULLL WP		340559.12N-1183526.81W	N 34.0997554	W 118.5907793	N34 05.985	W118 35.447	N34 05 59.12	W118 35 26.81
AVNIS	GMN VORTAC		344814.50N-1185140.90W	N 34.8040278	W 118.8613611	N34 48.242	W118 51.682	N34 48 14.50	W118 51 40.90
	NTSHA WP		340601.74N-1183301.57W	N 34.1004841	W 118.5504352	N34 06.029	W118 33.026	N34 06 01.74	W118 33 01.57
AVNIS	OROSZ WP		342536.18N-1184027.01W	N 34.4267167	W 118.6741694	N34 25.603	W118 40.450	N34 25 36.18	W118 40 27.01
	RCKYY WP		340022.77N-1183331.90W	N 34.0063249	W 118.5588623	N34 00.379	W118 33.532	N34 00 22.77	W118 33 31.90
	SKWRL WP		340329.58N-1183443.76W	N 34.0582175	W 118.5788218	N34 03.493	W118 34.729	N34 03 29.58	W118 34 43.76
AVNIS	VALEY WP		341448.91N-1182706.60W	N 34.2469194	W 118.4518333	N34 14.815	W118 27.110	N34 14 48.91	W118 27 06.60

RS Results SKWRL from KLAX

Last Evaluation: 28-Apr-2016 13:26:08

Reference Software Version: 0.3.6

Route Evaluation for RW24L:SKWRL CR:GMN

Required Engagement Climb Gradient (ft/NM): 500.0

SKWRL

RW24L:SKWRL CR:GMN Evaluation Results Part 1/2

Leg Tp	End Pt	Turn Tp	Alt Restr	Alt Restr 2	Spd Restr	Turn Ang	Leg Length	Min Seg Length
VA			+640.0				1.06	1.06
VM							0.0	0.0
DF	RCKYY	FLY_BY	+4000.0			45.0	0.0	0.0
TF	SKWRL	FLY_BY	+5000.0		230	4.29	3.26	1.36
TF	BULLL	FLY_BY	+6000.0			1.54	2.56	1.0
TF	OROSZ	FLY_BY				10.27	20.02	3.14
TF	GMN	FLY_BY					24.43	3.14

RW24L:SKWRL CR:GMN Evaluation Results Part 2/2

Leg Tp	End Pt	Turn Tp	DTA1	DTA1 Turn Rad	DTA1 Turn Alt	DTA1 Turn Spd	DTA1 Bank Ang	DTA1 Tailwind	DTA1 True Airspd	DTA1 vGround	DTA2	DTA2 Turn Rad	DTA2 Turn Alt	DTA2 Turn Spd	DTA2 Bank Ang	DTA2 Tailwind	DTA2 True Airspd	DTA2 vGround
VA					0.0	0.0					0.0		640.0	230.0	0.0	30.0	238.0	268.0
VM			0.0		640.0	230.0	0.0	30.0	238.0	268.0			0.0	0.0				
DF	RCKYY	FLY_BY			0.0	0.0					1.36	3.29	4000.0	230.0	22.5	55.0	251.0	306.0
TF	SKWRL	FLY_BY	1.36	3.29	4000.0	230.0	22.5	55.0	251.0	306.0	1.45	38.56	5632.13	230.0	2.15	58.0	257.0	315.0
TF	BULLL	FLY_BY	1.45	38.56	5632.13	230.0	2.15	58.0	257.0	315.0	1.48	110.0	6911.64	265.0	1.0	61.0	302.0	363.0
TF	OROSZ	FLY_BY	1.48	110.0	6911.64	265.0	1.0	61.0	302.0	363.0	3.14	34.92	14848.16	300.0	5.13	76.0	388.0	464.0
TF	GMN	FLY_BY	3.14	34.92	14848.16	300.0	5.13	76.0	388.0	464.0	0.0		23405.75	300.0	0.0	93.0	449.0	520.0

RW24L:SKWRL CR:GMN Criteria Failures

RDO64: A course change of 45 degrees was used at the IDF in lieu of 90 degrees (at or below FL195) and 70 degrees (above FL195). ATC Approval is Required.

Route Evaluation for RW24L:SKWRL CR:VALEY

Required Engagement Climb Gradient (ft/NM): 500.0

RW24L:SKWRL CR:VALEY Evaluation Results Part 1/2

Leg Tp	End Pt	Turn Tp	Alt Restr	Alt Restr 2	Spd Restr	Turn Ang	Leg Length	Min Seg Length
VA			+640.0				1.06	1.06
VM							0.0	0.0
DF	RCKYY	FLY_BY	+4000.0			45.0	0.0	0.0
TF	SKWRL	FLY_BY	+5000.0		230	46.95	3.26	2.81
TF	NTSHA	FLY_BY	+6000.0			0.0	2.9	1.45
TF	VALEY	FLY_BY					10.05	1.0

RW24L:SKWRL CR:VALEY Evaluation Results Part 2/2

Leg Tp	End Pt	Turn Tp	DTA1	DTA1 Turn Rad	DTA1 Turn Alt	DTA1 Turn Spd	DTA1 Bank Ang	DTA1 Tailwind	DTA1 True Airspd	DTA1 vGround	DTA2	DTA2 Turn Rad	DTA2 Turn Alt	DTA2 Turn Spd	DTA2 Bank Ang	DTA2 Tailwind	DTA2 True Airspd	DTA2 vGround
VA					0.0	0.0				0.0			640.0	230.0	0.0	30.0	238.0	268.0
VM			0.0		640.0	230.0	0.0	30.0	238.0	268.0			0.0	0.0				
DF	RCKYY	FLY_BY			0.0	0.0				1.36	3.29	4000.0	230.0	22.5	55.0	251.0	306.0	
TF	SKWRL	FLY_BY	1.36	3.29	4000.0	230.0	22.5	55.0	251.0	306.0	1.45	3.33	5632.13	230.0	23.48	58.0	257.0	315.0
TF	NTSHA	FLY_BY	1.45	3.33	5632.13	230.0	23.48	58.0	257.0	315.0	0.0		7082.57	265.0	0.0	61.0	303.0	364.0
TF	VALEY	FLY_BY	0.0		7082.57	265.0	0.0	61.0	303.0	364.0	0.0		11477.2	300.0	0.0	70.0	367.0	437.0

RW24L:SKWRL CR:VALEY Criteria Failures

RDO64: A course change of 45 degrees was used at the IDF in lieu of 90 degrees (at or below FL195) and 70 degrees (above FL195). ATC Approval is Required.

Route Evaluation for RW24R:SKWRL CR:GMN

Required Engagement Climb Gradient (ft/NM): 500.0

RW24R:SKWRL CR:GMN Evaluation Results Part 1/2

Leg Tp	End Pt	Turn Tp	Alt Restr	Alt Restr 2	Spd Restr	Turn Ang	Leg Length	Min Seg Length
VA			+640.0				1.05	1.05
VM							0.0	0.0
DF	RCKYY	FLY_BY	+4000.0			45.0	0.0	0.0
TF	SKWRL	FLY_BY	+5000.0		230	4.29	3.26	1.36
TF	BULLL	FLY_BY	+6000.0			1.54	2.56	1.0
TF	OROSZ	FLY_BY				10.27	20.02	3.14
TF	GMN	FLY_BY					24.43	3.14

RW24R:SKWRL CR:GMN Evaluation Results Part 2/2

Leg Tp	End Pt	Turn Tp	DTA1	DTA1 Turn Rad	DTA1 Turn Alt	DTA1 Turn Spd	DTA1 Bank Ang	DTA1 Tailwind	DTA1 True Airspd	DTA1 vGround	DTA2	DTA2 Turn Rad	DTA2 Turn Alt	DTA2 Turn Spd	DTA2 Bank Ang	DTA2 Tailwind	DTA2 True Airspd	DTA2 vGround
VA					0.0	0.0					0.0		640.0	230.0	0.0	30.0	238.0	268.0
VM			0.0		640.0	230.0	0.0	30.0	238.0	268.0			0.0	0.0				
DF	RCKYY	FLY_BY			0.0	0.0					1.36	3.29	4000.0	230.0	22.5	55.0	251.0	306.0
TF	SKWRL	FLY_BY	1.36	3.29	4000.0	230.0	22.5	55.0	251.0	306.0	1.45	38.56	5632.13	230.0	2.15	58.0	257.0	315.0
TF	BULLL	FLY_BY	1.45	38.56	5632.13	230.0	2.15	58.0	257.0	315.0	1.48	110.0	6911.64	265.0	1.0	61.0	302.0	363.0
TF	OROSZ	FLY_BY	1.48	110.0	6911.64	265.0	1.0	61.0	302.0	363.0	3.14	34.92	14848.16	300.0	5.13	76.0	388.0	464.0
TF	GMN	FLY_BY	3.14	34.92	14848.16	300.0	5.13	76.0	388.0	464.0	0.0		23405.75	300.0	0.0	93.0	449.0	520.0

RW24R:SKWRL CR:GMN Criteria Failures

RDO64: A course change of 45 degrees was used at the IDF in lieu of 90 degrees (at or below FL195) and 70 degrees (above FL195). ATC Approval is Required.

Route Evaluation for RW24R:SKWRL CR:VALEY

Required Engagement Climb Gradient (ft/NM): 500.0

RW24R:SKWRL CR:VALEY Evaluation Results Part 1/2

Leg Tp	End Pt	Turn Tp	Alt Restr	Alt Restr 2	Spd Restr	Turn Ang	Leg Length	Min Seg Length
VA			+640.0				1.05	1.05
VM							0.0	0.0
DF	RCKYY	FLY_BY	+4000.0			45.0	0.0	0.0
TF	SKWRL	FLY_BY	+5000.0		230	46.95	3.26	2.81
TF	NTSHA	FLY_BY	+6000.0			0.0	2.9	1.45
TF	VALEY	FLY_BY					10.05	1.0

RW24R:SKWRL CR:VALEY Evaluation Results Part 2/2

Leg Tp	End Pt	Turn Tp	DTA1	DTA1 Turn Rad	DTA1 Turn Alt	DTA1 Turn Spd	DTA1 Bank Ang	DTA1 Tailwind	DTA1 True Airspd	DTA1 vGround	DTA2	DTA2 Turn Rad	DTA2 Turn Alt	DTA2 Turn Spd	DTA2 Bank Ang	DTA2 Tailwind	DTA2 True Airspd	DTA2 vGround
VA					0.0	0.0				0.0			640.0	230.0	0.0	30.0	238.0	268.0
VM			0.0		640.0	230.0	0.0	30.0	238.0	268.0			0.0	0.0				
DF	RCKYY	FLY_BY			0.0	0.0				1.36	3.29		4000.0	230.0	22.5	55.0	251.0	306.0
TF	SKWRL	FLY_BY	1.36	3.29	4000.0	230.0	22.5	55.0	251.0	306.0	1.45	3.33	5632.13	230.0	23.48	58.0	257.0	315.0
TF	NTSHA	FLY_BY	1.45	3.33	5632.13	230.0	23.48	58.0	257.0	315.0	0.0		7082.57	265.0	0.0	61.0	303.0	364.0
TF	VALEY	FLY_BY	0.0		7082.57	265.0	0.0	61.0	303.0	364.0	0.0		11477.2	300.0	0.0	70.0	367.0	437.0

RW24R:SKWRL CR:VALEY Criteria Failures

RDO64: A course change of 45 degrees was used at the IDF in lieu of 90 degrees (at or below FL195) and 70 degrees (above FL195). ATC Approval is Required.

Route Evaluation for RW25L:SKWRL CR:GMN

Required Engagement Climb Gradient (ft/NM): 500.0

RW25L:SKWRL CR:GMN Evaluation Results Part 1/2

Leg Tp	End Pt	Turn Tp	Alt Restr	Alt Restr 2	Spd Restr	Turn Ang	Leg Length	Min Seg Length
VA			+640.0				1.04	1.04
VM							0.0	0.0
DF	RCKYY	FLY_BY	+4000.0			45.0	0.0	0.0
TF	SKWRL	FLY_BY	+5000.0		230	4.29	3.26	1.36
TF	BULLL	FLY_BY	+6000.0			1.54	2.56	1.0
TF	OROSZ	FLY_BY				10.27	20.02	3.14
TF	GMN	FLY_BY					24.43	3.14

RW25L:SKWRL CR:GMN Evaluation Results Part 2/2

Leg Tp	End Pt	Turn Tp	DTA1	DTA1 Turn Rad	DTA1 Turn Alt	DTA1 Turn Spd	DTA1 Bank Ang	DTA1 Tailwind	DTA1 True Airspd	DTA1 vGround	DTA2	DTA2 Turn Rad	DTA2 Turn Alt	DTA2 Turn Spd	DTA2 Bank Ang	DTA2 Tailwind	DTA2 True Airspd	DTA2 vGround
VA					0.0	0.0					0.0		640.0	230.0	0.0	30.0	238.0	268.0
VM			0.0		640.0	230.0	0.0	30.0	238.0	268.0			0.0	0.0				
DF	RCKYY	FLY_BY			0.0	0.0					1.36	3.29	4000.0	230.0	22.5	55.0	251.0	306.0
TF	SKWRL	FLY_BY	1.36	3.29	4000.0	230.0	22.5	55.0	251.0	306.0	1.45	38.56	5632.13	230.0	2.15	58.0	257.0	315.0
TF	BULLL	FLY_BY	1.45	38.56	5632.13	230.0	2.15	58.0	257.0	315.0	1.48	110.0	6911.64	265.0	1.0	61.0	302.0	363.0
TF	OROSZ	FLY_BY	1.48	110.0	6911.64	265.0	1.0	61.0	302.0	363.0	3.14	34.92	14848.16	300.0	5.13	76.0	388.0	464.0
TF	GMN	FLY_BY	3.14	34.92	14848.16	300.0	5.13	76.0	388.0	464.0	0.0		23405.75	300.0	0.0	93.0	449.0	520.0

RW25L:SKWRL CR:GMN Criteria Failures

RDO64: A course change of 45 degrees was used at the IDF in lieu of 90 degrees (at or below FL195) and 70 degrees (above FL195). ATC Approval is Required.

Route Evaluation for RW25L:SKWRL CR:VALEY

Required Engagement Climb Gradient (ft/NM): 500.0

RW25L:SKWRL CR:VALEY Evaluation Results Part 1/2

Leg Tp	End Pt	Turn Tp	Alt Restr	Alt Restr 2	Spd Restr	Turn Ang	Leg Length	Min Seg Length
VA			+640.0				1.04	1.04
VM							0.0	0.0
DF	RCKYY	FLY_BY	+4000.0			45.0	0.0	0.0
TF	SKWRL	FLY_BY	+5000.0		230	46.95	3.26	2.81
TF	NTSHA	FLY_BY	+6000.0			0.0	2.9	1.45
TF	VALEY	FLY_BY					10.05	1.0

RW25L:SKWRL CR:VALEY Evaluation Results Part 2/2

Leg Tp	End Pt	Turn Tp	DTA1	DTA1 Turn Rad	DTA1 Turn Alt	DTA1 Turn Spd	DTA1 Bank Ang	DTA1 Tailwind	DTA1 True Airspd	DTA1 vGround	DTA2	DTA2 Turn Rad	DTA2 Turn Alt	DTA2 Turn Spd	DTA2 Bank Ang	DTA2 Tailwind	DTA2 True Airspd	DTA2 vGround
VA					0.0	0.0				0.0			640.0	230.0	0.0	30.0	238.0	268.0
VM			0.0		640.0	230.0	0.0	30.0	238.0	268.0			0.0	0.0				
DF	RCKYY	FLY_BY			0.0	0.0				1.36	3.29	4000.0	230.0	22.5	55.0	251.0	306.0	
TF	SKWRL	FLY_BY	1.36	3.29	4000.0	230.0	22.5	55.0	251.0	306.0	1.45	3.33	5632.13	230.0	23.48	58.0	257.0	315.0
TF	NTSHA	FLY_BY	1.45	3.33	5632.13	230.0	23.48	58.0	257.0	315.0	0.0		7082.57	265.0	0.0	61.0	303.0	364.0
TF	VALEY	FLY_BY	0.0		7082.57	265.0	0.0	61.0	303.0	364.0	0.0		11477.2	300.0	0.0	70.0	367.0	437.0

RW25L:SKWRL CR:VALEY Criteria Failures

RDO64: A course change of 45 degrees was used at the IDF in lieu of 90 degrees (at or below FL195) and 70 degrees (above FL195). ATC Approval is Required.

Route Evaluation for RW25R:SKWRL CR:GMN

Required Engagement Climb Gradient (ft/NM): 500.0

RW25R:SKWRL CR:GMN Evaluation Results Part 1/2

Leg Tp	End Pt	Turn Tp	Alt Restr	Alt Restr 2	Spd Restr	Turn Ang	Leg Length	Min Seg Length
VA			+640.0				1.04	1.04
VM							0.0	0.0
DF	RCKYY	FLY_BY	+4000.0			45.0	0.0	0.0
TF	SKWRL	FLY_BY	+5000.0		230	4.29	3.26	1.36
TF	BULLL	FLY_BY	+6000.0			1.54	2.56	1.0
TF	OROSZ	FLY_BY				10.27	20.02	3.14
TF	GMN	FLY_BY					24.43	3.14

RW25R:SKWRL CR:GMN Evaluation Results Part 2/2

Leg Tp	End Pt	Turn Tp	DTA1	DTA1 Turn Rad	DTA1 Turn Alt	DTA1 Turn Spd	DTA1 Bank Ang	DTA1 Tailwind	DTA1 True Airspd	DTA1 vGround	DTA2	DTA2 Turn Rad	DTA2 Turn Alt	DTA2 Turn Spd	DTA2 Bank Ang	DTA2 Tailwind	DTA2 True Airspd	DTA2 vGround
VA					0.0	0.0					0.0		640.0	230.0	0.0	30.0	238.0	268.0
VM			0.0		640.0	230.0	0.0	30.0	238.0	268.0			0.0	0.0				
DF	RCKYY	FLY_BY			0.0	0.0					1.36	3.29	4000.0	230.0	22.5	55.0	251.0	306.0
TF	SKWRL	FLY_BY	1.36	3.29	4000.0	230.0	22.5	55.0	251.0	306.0	1.45	38.56	5632.13	230.0	2.15	58.0	257.0	315.0
TF	BULLL	FLY_BY	1.45	38.56	5632.13	230.0	2.15	58.0	257.0	315.0	1.48	110.0	6911.64	265.0	1.0	61.0	302.0	363.0
TF	OROSZ	FLY_BY	1.48	110.0	6911.64	265.0	1.0	61.0	302.0	363.0	3.14	34.92	14848.16	300.0	5.13	76.0	388.0	464.0
TF	GMN	FLY_BY	3.14	34.92	14848.16	300.0	5.13	76.0	388.0	464.0	0.0		23405.75	300.0	0.0	93.0	449.0	520.0

RW25R:SKWRL CR:GMN Criteria Failures

RDO64: A course change of 45 degrees was used at the IDF in lieu of 90 degrees (at or below FL195) and 70 degrees (above FL195). ATC Approval is Required.

Route Evaluation for RW25R:SKWRL CR:VALEY

Required Engagement Climb Gradient (ft/NM): 500.0

RW25R:SKWRL CR:VALEY Evaluation Results Part 1/2

Leg Tp	End Pt	Turn Tp	Alt Restr	Alt Restr 2	Spd Restr	Turn Ang	Leg Length	Min Seg Length
VA			+640.0				1.04	1.04
VM							0.0	0.0
DF	RCKYY	FLY_BY	+4000.0			45.0	0.0	0.0
TF	SKWRL	FLY_BY	+5000.0		230	46.95	3.26	2.81
TF	NTSHA	FLY_BY	+6000.0			0.0	2.9	1.45
TF	VALEY	FLY_BY					10.05	1.0

RW25R:SKWRL CR:VALEY Evaluation Results Part 2/2

Leg Tp	End Pt	Turn Tp	DTA1	DTA1 Turn Rad	DTA1 Turn Alt	DTA1 Turn Spd	DTA1 Bank Ang	DTA1 Tailwind	DTA1 True Airspd	DTA1 vGround	DTA2	DTA2 Turn Rad	DTA2 Turn Alt	DTA2 Turn Spd	DTA2 Bank Ang	DTA2 Tailwind	DTA2 True Airspd	DTA2 vGround
VA					0.0	0.0				0.0			640.0	230.0	0.0	30.0	238.0	268.0
VM			0.0		640.0	230.0	0.0	30.0	238.0	268.0			0.0	0.0				
DF	RCKYY	FLY_BY			0.0	0.0				1.36	3.29		4000.0	230.0	22.5	55.0	251.0	306.0
TF	SKWRL	FLY_BY	1.36	3.29	4000.0	230.0	22.5	55.0	251.0	306.0	1.45	3.33	5632.13	230.0	23.48	58.0	257.0	315.0
TF	NTSHA	FLY_BY	1.45	3.33	5632.13	230.0	23.48	58.0	257.0	315.0	0.0		7082.57	265.0	0.0	61.0	303.0	364.0
TF	VALEY	FLY_BY	0.0		7082.57	265.0	0.0	61.0	303.0	364.0	0.0		11477.2	300.0	0.0	70.0	367.0	437.0

RW25R:SKWRL CR:VALEY Criteria Failures

RDO64: A course change of 45 degrees was used at the IDF in lieu of 90 degrees (at or below FL195) and 70 degrees (above FL195). ATC Approval is Required.

Evaluation Input

SKWRL

Name:	RS Results SKWRL from KLAX
Project:	LAX SKWRL SID_Paperwork_12E-NEW24L_20160428
Last evaluated:	28-Apr-2016 13:26:08
Evaluated obstacles?:	false
Obstacle Database:	-
Evaluated terrain?:	false
Worst Case Vegetation Height (ft) AGL:	0
Wind Spiral Limiting Splay Angle (deg):	-
IDF Course Change Override?:	true

Procedure Criteria Failures

RDO64: A course change of 45 degrees was used at the IDF in lieu of 90 degrees (at or below FL195) and 70 degrees (above FL195). ATC Approval is Required.

Evaluation Notes and Warnings

No failures.

Database Effective Dates

Database	Date
UddfObstacle	03/09/2015
Tiled AIRNAV2	N/A
OEAAA	N/A
NFDC	03/31/2016
IFP_OFFLINE	N/A
AVNIS	04/28/2016
DOF	03/31/2016
AVNII_OFFLINE	N/A
AIRNAV2	04/28/2016
CIFP	04/28/2016

Notes: