

TOPGN RNAV

Point Of Contact

Organization Name - Southern California Metroplex

POC's Name - Robert E. Henry-Metroplex Lead/Jose Gonzalez-NATCA Co-Lead

Telephone Number - (661) 265-8434

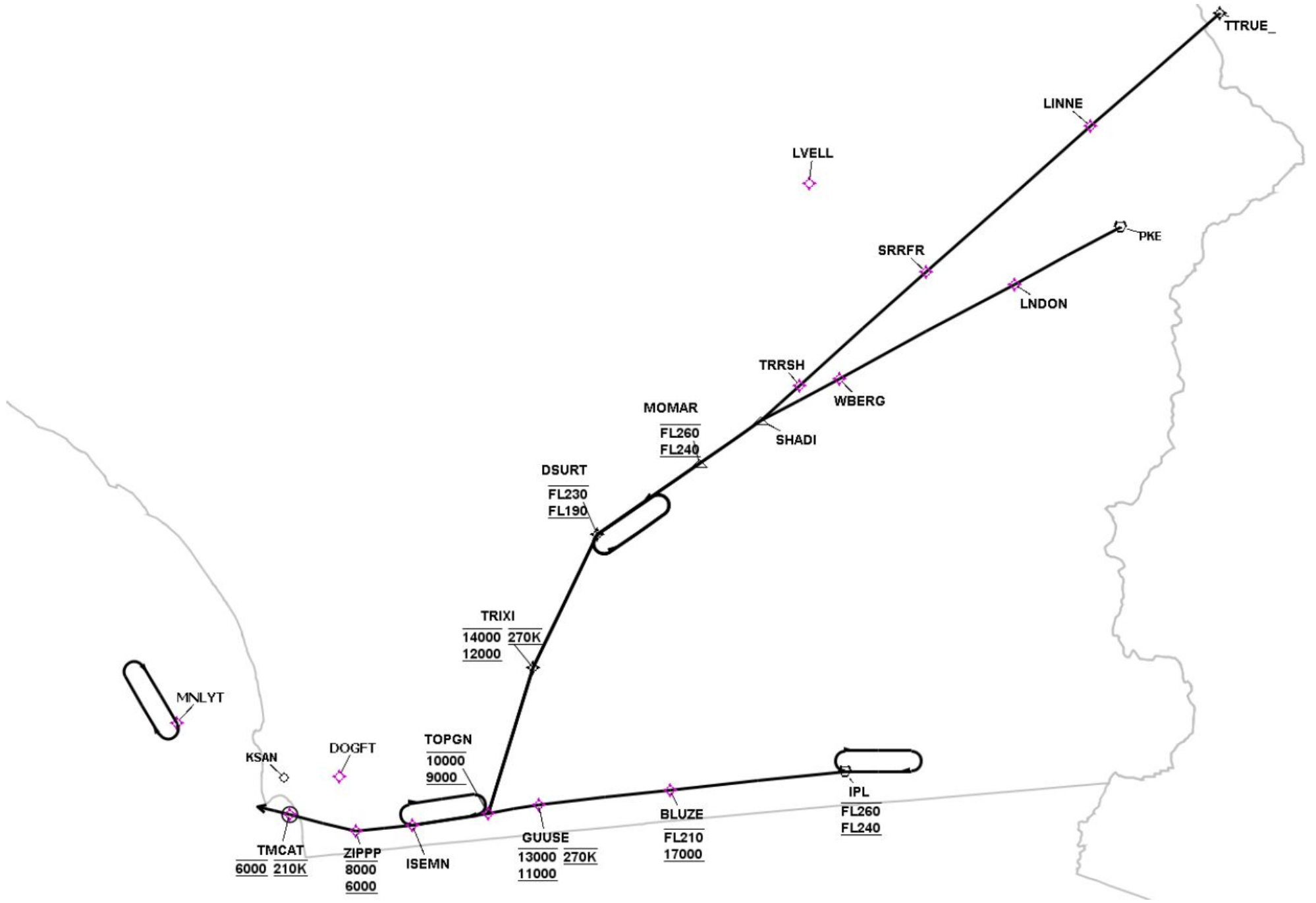
FAX Number - 661-265-8338

Email Address - Robert.Henry@faa.gov;Jose.J.Gonzalez@faa.gov

TARGETS Distribution Package

Version:5.0.4.1

Date: Wed Sep 23 14:35:08 PDT 2015



TOPGN RNAV

En Route Transition Data - IPL

DB	End Point	Latitude (D° M' S.ss")	Longitude (D° M' S.ss")	FO/FB	Leg	TC	MC	Distance	Altitude	Speed	MEA	MOCA	Arc Center Lat (D° M' S.ss")	Arc Center Lon (D° M' S.ss")	Arc Radius (NM)
AVNIS	IPL VORTAC	N32 44 55.92	W115 30 30.90		IF				+24000 -26000						
AVNIS	IPL VORTAC	N32 44 55.92	W115 30 30.90		HM	270.49	259.49	10.00							
	BLUZE WP	N32 42 04.52	W116 01 52.25	FB	TF	263.99	252.99	26.61	+17000 -21000		12000	5600			
	GUUSE WP	N32 39 56.86	W116 25 30.61	FB	TF	264.03	253.03	20.06	+11000 -13000	270	9000	7000			
	TOPGN WP	N32 38 38.67	W116 34 36.44	FB	TF	260.43	249.43	7.79	+9000 -10000		9000	6400			

En Route Transition Data - MOMAR

DB	End Point	Latitude (D° M' S.ss")	Longitude (D° M' S.ss")	FO/FB	Leg	TC	MC	Distance	Altitude	Speed	MEA	MOCA	Arc Center Lat (D° M' S.ss")	Arc Center Lon (D° M' S.ss")	Arc Radius (NM)
AVNIS	MOMAR WP	N33 30 54.13	W115 56 40.14		IF				+24000 -26000						
AVNIS	DSURT WP	N33 20 15.00	W116 15 00.00	FB	TF	235.36	224.36	18.67	+19000 -23000		12500	8400			
AVNIS	DSURT WP	N33 20 15.00	W116 15 00.00		HM	235.36	224.36	10.00			12000				
AVNIS	TRIXI WP	N33 00 20.00	W116 26 39.00	FB	TF	206.25	195.25	22.15	+12000 -14000	270	12000	7900			
	TOPGN WP	N32 38 38.67	W116 34 36.44	FB	TF	197.25	186.25	22.66	+9000 -10000		9000	8500			

En Route Transition Data - PKE

DB	End Point	Latitude (D° M' S.ss")	Longitude (D° M' S.ss")	FO/FB	Leg	TC	MC	Distance	Altitude	Speed	MEA	MOCA	Arc Center Lat (D° M' S.ss")	Arc Center Lon (D° M' S.ss")	Arc Radius (NM)
AVNIS	PKE VORTAC	N34 06 07.10	W114 40 55.44		IF										
	LNDON WP	N33 57 37.19	W115 00 08.16	FB	TF	242.11	231.11	18.08			15000	5100			
	WBERG WP	N33 43 27.29	W115 31 36.16	FB	TF	241.80	230.80	29.78			15000	6600			
AVNIS	SHADI WP	N33 37 14.18	W115 45 41.97	FB	TF	242.25	231.25	13.30			14000	6600			
AVNIS	MOMAR WP	N33 30 54.13	W115 56 40.14	FB	TF	235.45	224.45	11.13	+24000 -26000		13000	6100			
AVNIS	DSURT WP	N33 20 15.00	W116 15 00.00	FB	TF	235.36	224.36	18.67	+19000 -23000		12500	8400			
AVNIS	DSURT WP	N33 20 15.00	W116 15 00.00		HM	235.36	224.36	10.00							
AVNIS	TRIXI WP	N33 00 20.00	W116 26 39.00	FB	TF	206.25	195.25	22.15	+12000 -14000	270	12000	7900			
	TOPGN WP	N32 38 38.67	W116 34 36.44	FB	TF	197.25	186.25	22.66	+9000 -10000		9000	8500			

TOPGN RNAV

En Route Transition Data - TTRUE

DB	End Point	Latitude (D° M' S.ss")	Longitude (D° M' S.ss")	FO/FB	Leg	TC	MC	Distance	Altitude	Speed	MEA	MOCA	Arc Center Lat (D° M' S.ss")	Arc Center Lon (D° M' S.ss")	Arc Radius (NM)
	TTRUE WP	N34 38 01.53	W114 23 05.05		IF										
	LINNE WP	N34 21 09.85	W114 46 19.99	FB	TF	228.89	217.89	25.55			15000	6000			
	SRRFR WP	N33 59 24.09	W115 15 55.37	FB	TF	228.63	217.63	32.78			15000	6600			
	TRRSH WP	N33 42 30.29	W115 38 44.15	FB	TF	228.51	217.51	25.41			15000	6900			
AVNIS	SHADI WP	N33 37 14.18	W115 45 41.97	FB	TF	227.89	216.89	7.84			15000	6900			
AVNIS	MOMAR WP	N33 30 54.13	W115 56 40.14	FB	TF	235.45	224.45	11.13	+24000 -26000		13000	6100			
AVNIS	DSURT WP	N33 20 15.00	W116 15 00.00	FB	TF	235.36	224.36	18.67	+19000 -23000		12500	8400			
AVNIS	DSURT WP	N33 20 15.00	W116 15 00.00		HM	235.36	224.36	10.00							
AVNIS	TRIXI WP	N33 00 20.00	W116 26 39.00	FB	TF	206.25	195.25	22.15	+12000 -14000	270	12000	7900			
	TOPGN WP	N32 38 38.67	W116 34 36.44	FB	TF	197.25	186.25	22.66	+9000 -10000		9000	8500			

Common Route Data - RW09

DB	End Point	Latitude (D° M' S.ss")	Longitude (D° M' S.ss")	FO/FB	Leg	TC	MC	Distance	Altitude	Speed	MEA	MOCA	Arc Center Lat (D° M' S.ss")	Arc Center Lon (D° M' S.ss")	Arc Radius (NM)
	TOPGN WP	N32 38 38.67	W116 34 36.44		IF				+9000 -10000						
	ISEMN WP	N32 36 53.70	W116 48 18.95	FB	TF	261.48	250.48	11.71			6400	6400			
	ISEMN WP	N32 36 53.70	W116 48 18.95		HM	261.48	250.48	10.00							
	ZIPPP WP	N32 35 59.35	W116 58 24.18	FB	TF	263.99	252.99	8.57	+6000 -8000		6000	5800			
	TMCAT WP	N32 38 28.88	W117 10 17.14	FO	TF	283.97	272.97	10.34	6000	210	6000	3000			
	TMCAT WP	N32 38 28.88	W117 10 17.14		FM	284.00	273.00								

Waypoint Data

DB	Waypoint	Arc Center	Lat-Long (DMS.S)	Latitude (Deg)	Longitude (Deg)	Latitude (D°, M.mm')	Longitude (D°, M.mm')	Latitude (D° M' S.ss")	Longitude (D° M' S.ss")
	BLUZE WP		324204.52N-1160152.25W	N 32.7012559	W 116.0311805	N32 42.075	W116 01.871	N32 42 04.52	W116 01 52.25
AVNIS	DSURT WP		332015.00N-1161500.00W	N 33.3375000	W 116.2500000	N33 20.250	W116 15.000	N33 20 15.00	W116 15 00.00
	GUUSE WP		323956.86N-1162530.61W	N 32.6657934	W 116.4251689	N32 39.948	W116 25.510	N32 39 56.86	W116 25 30.61
AVNIS	IPL VORTAC		324455.92N-1153030.90W	N 32.7488667	W 115.5085833	N32 44.932	W115 30.515	N32 44 55.92	W115 30 30.90
	ISEMN WP		323653.70N-1164818.95W	N 32.6149169	W 116.8052631	N32 36.895	W116 48.316	N32 36 53.70	W116 48 18.95
	LINNE WP		342109.85N-1144619.99W	N 34.3527368	W 114.7722207	N34 21.164	W114 46.333	N34 21 09.85	W114 46 19.99
	LNDON WP		335737.19N-1150008.16W	N 33.9603314	W 115.0022671	N33 57.620	W115 00.136	N33 57 37.19	W115 00 08.16
AVNIS	MOMAR WP		333054.13N-1155640.14W	N 33.5150361	W 115.9444833	N33 30.902	W115 56.669	N33 30 54.13	W115 56 40.14
AVNIS	NJK TACAN		324954.60N-1154052.20W	N 32.8318333	W 115.6811667	N32 49.910	W115 40.870	N32 49 54.60	W115 40 52.20
AVNIS	PKE VORTAC		340607.10N-1144055.44W	N 34.1019722	W 114.6820667	N34 06.118	W114 40.924	N34 06 07.10	W114 40 55.44
AVNIS	SHADI WP		333714.18N-1154541.97W	N 33.6206056	W 115.7616583	N33 37.236	W115 45.699	N33 37 14.18	W115 45 41.97
	SRRFR WP		335924.09N-1151555.37W	N 33.9900254	W 115.2653795	N33 59.402	W115 15.923	N33 59 24.09	W115 15 55.37
	TMCAT WP		323828.88N-1171017.14W	N 32.6413564	W 117.1714277	N32 38.481	W117 10.286	N32 38 28.88	W117 10 17.14
	TOPGN WP		323838.67N-1163436.44W	N 32.6440757	W 116.5767886	N32 38.645	W116 34.607	N32 38 38.67	W116 34 36.44
AVNIS	TRIXI WP		330020.00N-1162639.00W	N 33.0055556	W 116.4441667	N33 00.333	W116 26.650	N33 00 20.00	W116 26 39.00
	TRRSH WP		334230.29N-1153844.15W	N 33.7084131	W 115.6455969	N33 42.505	W115 38.736	N33 42 30.29	W115 38 44.15
	TTRUE WP		343801.53N-1142305.05W	N 34.6337577	W 114.3847373	N34 38.025	W114 23.084	N34 38 01.53	W114 23 05.05
	WBERG WP		334327.29N-1153136.16W	N 33.7242471	W 115.5267110	N33 43.455	W115 31.603	N33 43 27.29	W115 31 36.16
	ZIPPP WP		323559.35N-1165824.18W	N 32.5998187	W 116.9733838	N32 35.989	W116 58.403	N32 35 59.35	W116 58 24.18

RS Results RW09

Last Evaluation: 23-Sep-2015 14:31:52
Reference Software Version: 1.5.2

Route Evaluation for IPL:RW09

IPL:RW09 Evaluation Results Part 1/2

Leg Tp	End Pt	Turn Tp	Alt Restr	Alt Restr 2	Spd Restr	Turn Ang	Leg Length	Min Seg Length
IF	IPL		+24000.0	-26000.0			0.0	0.0
TF	BLUZE	FLY_BY	+17000.0	-21000.0		0.32	26.61	1.0
TF	GUUSE	FLY_BY	+11000.0	-13000.0	270.0	3.39	20.06	1.0
TF	TOPGN	FLY_BY	+9000.0	-10000.0		1.14	7.79	1.0
TF	ISEMN	FLY_BY				2.63	11.71	1.0
TF	ZIPPP	FLY_BY	+6000.0	-8000.0		20.07	8.57	1.82
TF	TMCAT	FLY_OVER	6000.0		210.0		10.34	1.82
FM							0.0	0.0

IPL:RW09 Evaluation Results Part 2/2

Leg Tp	End Pt	Turn Tp	DTA1	DTA1 Turn Rad	DTA1 Turn Alt	DTA1 Turn Spd	DTA1 Bank Ang	DTA1 Tailwind	DTA1 True Airspd	DTA1 vGround	DTA2	DTA2 Turn Rad	DTA2 Turn Alt	DTA2 Turn Spd	DTA2 Bank Ang	DTA2 Tailwind	DTA2 True Airspd	DTA2 vGround
IF	IPL				0.0	0.0							0.0	0.0				
TF	BLUZE	FLY_BY	0.0		24000.0	300.0	0.0	95.0	454.0	526.0	0.55	194.75	17000.0	300.0	1.0	81.0	402.0	483.0
TF	GUUSE	FLY_BY	0.55	194.75	17000.0	300.0	1.0	81.0	402.0	483.0	2.38	80.43	11947.45	270.0	1.69	71.0	333.0	404.0
TF	TOPGN	FLY_BY	2.38	80.43	11947.45	270.0	1.69	71.0	333.0	404.0	1.26	126.98	10000.0	270.0	1.0	67.0	323.0	390.0
TF	ISEMN	FLY_BY	1.26	126.98	10000.0	270.0	1.0	67.0	323.0	390.0	2.22	96.66	10000.0	270.0	1.31	67.0	323.0	390.0
TF	ZIPPP	FLY_BY	2.22	96.66	10000.0	270.0	1.31	67.0	323.0	390.0	1.82	10.26	8000.0	250.0	10.04	63.0	290.0	353.0
TF	TMCAT	FLY_OVER	1.82	10.26	8000.0	250.0	10.04	63.0	290.0	353.0	0.0		6000.0	210.0	0.0	59.0	236.0	295.0
FM			0.0		6000.0	210.0	0.0	59.0	236.0	295.0			0.0	0.0				

IPL:RW09 Obstacle Evaluation

Start Pt	End Pt	Name	Source	AC (H/V) (ft) AMSL	Lat	Long	Height (ft) AMSL	Mnts Area	Pri/Sec Area	ROC (ft)	WCVH (ft)	MOCA (ft)	Min OCS Alt (ft)	Date
IPL	BLUZE	TerrainPt_19_IPL:RW09_IPL:BLUZE		4E (+-250/+125)	N32° 37' 33.00"	W116° 03' 39.00"	3979.66	true	S	1416.15		5596	5595.81	23-Sep-2015 14:33:37
BLUZE	GUUSE	06-002934	AVNIS	5E (+-500/+125)	N32° 43' 30.97"	W116° 20' 49.02"	4956.0	true	P	2000.0		6956	6956.0	19-May-2015 12:04:32
GUUSE	TOPGN	TerrainPt_8_IPL:RW09_GUUSE:TOPGN		4E (+-250/+125)	N32° 42' 18.00"	W116° 33' 48.00"	4166.67	true	P	2000.0		6367	6366.67	23-Sep-2015 14:33:37
TOPGN	ISEMN	TerrainPt_17_IPL:RW09_TOPGN:ISEMN		4E (+-250/+125)	N32° 42' 18.00"	W116° 33' 48.00"	4166.67	true	P	2000.0		6367	6366.67	23-Sep-2015 14:33:37
ISEMN	ZIPPP	TerrainPt_0_IPL:RW09_ISEMN:ZIPPP		4E (+-250/+125)	N32° 35' 39.00"	W116° 50' 42.00"	3566.27	true	P	2000.0		5767	5766.27	23-Sep-2015 14:33:37
ZIPPP	TMCAT	TerrainPt_35_IPL:RW09_ZIPPP:TMCAT		4E (+-250/+125)	N32° 37' 57.00"	W116° 57' 33.00"	728.35	true	P	2000.0		2929	2928.35	23-Sep-2015 14:33:37

IPL:RW09 Criteria Failures

No failures.

Route Evaluation for MOMAR:RW09

MOMAR:RW09 Evaluation Results Part 1/2

Leg Tp	End Pt	Turn Tp	Alt Restr	Alt Restr 2	Spd Restr	Turn Ang	Leg Length	Min Seg Length
IF	MOMAR		+24000.0	-26000.0			0.0	0.0
TF	DSURT	FLY_BY	+19000.0	-23000.0		28.95	18.67	9.95
TF	TRIXI	FLY_BY	+12000.0	-14000.0	270.0	8.89	22.15	9.95
TF	TOPGN	FLY_BY	+9000.0	-10000.0		64.31	22.66	2.99
TF	ISEMN	FLY_BY				2.63	11.71	2.99
TF	ZIPPP	FLY_BY	+6000.0	-8000.0		20.07	8.57	1.82
TF	TMCAT	FLY_OVER	6000.0		210.0		10.34	1.82
FM							0.0	0.0

MOMAR:RW09 Evaluation Results Part 2/2

Leg Tp	End Pt	Turn Tp	DTA1	DTA1 Turn Rad	DTA1 Turn Alt	DTA1 Turn Spd	DTA1 Bank Ang	DTA1 Tailwind	DTA1 True Airspd	DTA1 vGround	DTA2	DTA2 Turn Rad	DTA2 Turn Alt	DTA2 Turn Spd	DTA2 Bank Ang	DTA2 Tailwind	DTA2 True Airspd	DTA2 vGround
IF	MOMAR				0.0	0.0							0.0	0.0				
TF	DSURT	FLY_BY	0.0		24204.91	300.0	0.0	95.0	456.0	528.0	9.95	38.53	19538.4	300.0	5.0	86.0	420.0	481.0
TF	TRIXI	FLY_BY	9.95	38.53	19538.4	300.0	5.0	86.0	420.0	481.0	2.56	32.9	14000.0	270.0	4.45	75.0	344.0	419.0
TF	TOPGN	FLY_BY	2.56	32.9	14000.0	270.0	4.45	75.0	344.0	419.0	2.99	4.75	10000.0	270.0	25.0	67.0	323.0	390.0
TF	ISEMN	FLY_BY	2.99	4.75	10000.0	270.0	25.0	67.0	323.0	390.0	2.22	96.66	10000.0	270.0	1.31	67.0	323.0	390.0
TF	ZIPPP	FLY_BY	2.22	96.66	10000.0	270.0	1.31	67.0	323.0	390.0	1.82	10.26	8000.0	250.0	10.04	63.0	290.0	353.0
TF	TMCAT	FLY_OVER	1.82	10.26	8000.0	250.0	10.04	63.0	290.0	353.0	0.0		6000.0	210.0	0.0	59.0	236.0	295.0
FM			0.0		6000.0	210.0	0.0	59.0	236.0	295.0			0.0	0.0				

MOMAR:RW09 Obstacle Evaluation

Start Pt	End Pt	Name	Source	AC (H/V) (ft) AMSL	Lat	Long	Height (ft) AMSL	Mnts Area	Pri/Sec Area	ROC (ft)	WCVH (ft)	MOCA (ft)	Min OCS Alt (ft)	Date
MOMAR	DSURT	TerrainPt_4_MOMAR:RW09_MOMAR:DSURT		4E (+-250/+125)	N33° 25' 51.00"	W116° 13' 45.00"	6190.94	true	P	2000.0		8391	8390.94	23-Sep-2015 14:33:37
DSURT	TRIXI	TerrainPt_33_MOMAR:RW09_DSURT:TRIXI		4E (+-250/+125)	N33° 03' 03.00"	W116° 28' 48.00"	5643.04	true	P	2000.0		7844	7843.04	23-Sep-2015 14:33:38
TRIXI	TOPGN	TerrainPt_27_MOMAR:RW09_TRIXI:TOPGN		4E (+-250/+125)	N32° 53' 30.00"	W116° 25' 15.00"	6263.12	true	P	2000.0		8464	8463.12	23-Sep-2015 14:33:38
TOPGN	ISEMN	TerrainPt_17_IPL:RW09_TOPGN:ISEMN		4E (+-250/+125)	N32° 42' 18.00"	W116° 33' 48.00"	4166.67	true	P	2000.0		6367	6366.67	23-Sep-2015 14:33:37
ISEMN	ZIPPP	TerrainPt_0_IPL:RW09_ISEMNI:ZIPPP		4E (+-250/+125)	N32° 35' 39.00"	W116° 50' 42.00"	3566.27	true	P	2000.0		5767	5766.27	23-Sep-2015 14:33:37
ZIPPP	TMCAT	TerrainPt_35_IPL:RW09_ZIPPP:TMCAT		4E (+-250/+125)	N32° 37' 57.00"	W116° 57' 33.00"	728.35	true	P	2000.0		2929	2928.35	23-Sep-2015 14:33:37

TOPGN RNAV

MOMAR:RW09 Criteria Failures

No failures.

Route Evaluation for PKE:RW09

PKE:RW09 Evaluation Results Part 1/2

Leg Tp	End Pt	Turn Tp	Alt Restr	Alt Restr 2	Spd Restr	Turn Ang	Leg Length	Min Seg Length
IF	PKE						0.0	0.0
TF	LNDON	FLY_BY				0.13	18.08	1.0
TF	WBERG	FLY_BY				0.74	29.78	1.0
TF	SHADI	FLY_BY				6.67	13.3	1.0
TF	MOMAR	FLY_BY	+24000.0	-26000.0		0.01	11.13	1.0
TF	DSURT	FLY_BY	+19000.0	-23000.0		28.95	18.67	9.95
TF	TRIXI	FLY_BY	+12000.0	-14000.0	270.0	8.89	22.15	9.95
TF	TOPGN	FLY_BY	+9000.0	-10000.0		64.31	22.66	2.99
TF	ISEMN	FLY_BY				2.63	11.71	2.99
TF	ZIPPP	FLY_BY	+6000.0	-8000.0		20.07	8.57	1.82
TF	TMCAT	FLY_OVER	6000.0		210.0		10.34	1.82
FM							0.0	0.0

PKE:RW09 Evaluation Results Part 2/2

Leg Tp	End Pt	Turn Tp	DTA1	DTA1 Turn Rad	DTA1 Turn Alt	DTA1 Turn Spd	DTA1 Bank Ang	DTA1 Tailwind	DTA1 True Airspd	DTA1 vGround	DTA2	DTA2 Turn Rad	DTA2 Turn Alt	DTA2 Turn Spd	DTA2 Bank Ang	DTA2 Tailwind	DTA2 True Airspd	DTA2 vGround
IF	PKE				0.0	0.0							0.0	0.0				
TF	LNDON	FLY_BY	0.0		41000.0	300.0	0.0	128.0	629.0	570.0	0.06	54.11	37759.17	300.0	5.0	122.0	588.0	570.0
TF	WBERG	FLY_BY	0.06	54.11	37759.17	300.0	5.0	122.0	588.0	570.0	0.35	54.11	30314.13	300.0	5.0	107.0	509.0	570.0
TF	SHADI	FLY_BY	0.35	54.11	30314.13	300.0	5.0	107.0	509.0	570.0	2.99	51.3	26988.66	300.0	5.0	100.0	479.0	555.0
TF	MOMAR	FLY_BY	2.99	51.3	26988.66	300.0	5.0	100.0	479.0	555.0	0.0		24204.91	300.0	0.0	95.0	456.0	528.0
TF	DSURT	FLY_BY	0.0		24204.91	300.0	0.0	95.0	456.0	528.0	9.95	38.53	19538.4	300.0	5.0	86.0	420.0	481.0
TF	TRIXI	FLY_BY	9.95	38.53	19538.4	300.0	5.0	86.0	420.0	481.0	2.56	32.9	14000.0	270.0	4.45	75.0	344.0	419.0
TF	TOPGN	FLY_BY	2.56	32.9	14000.0	270.0	4.45	75.0	344.0	419.0	2.99	4.75	10000.0	270.0	25.0	67.0	323.0	390.0
TF	ISEMN	FLY_BY	2.99	4.75	10000.0	270.0	25.0	67.0	323.0	390.0	2.22	96.66	10000.0	270.0	1.31	67.0	323.0	390.0
TF	ZIPPP	FLY_BY	2.22	96.66	10000.0	270.0	1.31	67.0	323.0	390.0	1.82	10.26	8000.0	250.0	10.04	63.0	290.0	353.0
TF	TMCAT	FLY_OVER	1.82	10.26	8000.0	250.0	10.04	63.0	290.0	353.0	0.0		6000.0	210.0	0.0	59.0	236.0	295.0
FM			0.0		6000.0	210.0	0.0	59.0	236.0	295.0			0.0	0.0				

PKE:RW09 Obstacle Evaluation

Start Pt	End Pt	Name	Source	AC (H/V (ft) AMSL)	Lat	Long	Height (ft) AMSL	Mnts Area	Pri/Sec Area	ROC (ft)	WCVH (ft)	MOCA (ft)	Min OCS Alt (ft)	Date
PKE	LNDON	TerrainPt_20_PKE:RW09_PKE:LNDON		4E (+-250/+125)	N33° 54' 33.00"	W114° 57' 15.00"	2877.3	true	P	2000.0		5078	5077.3	23-Sep-2015 14:33:38
LNDON	WBERG	TerrainPt_23_PKE:RW09_LNDON:WBERG		4E (+-250/+125)	N33° 58' 12.00"	W115° 04' 24.00"	4347.11	true	P	2000.0		6548	6547.11	23-Sep-2015 14:33:38
WBERG	SHADI	TerrainPt_6_PKE:RW09_WBERG:SHADI		4E (+-250/+125)	N33° 44' 36.00"	W115° 44' 24.00"	5328.08	true	S	1002.42		6531	6530.5	23-Sep-2015 14:33:38
SHADI	MOMAR	TerrainPt_8_PKE:RW09_SHADI:MOMAR		4E (+-250/+125)	N33° 34' 09.00"	W115° 46' 51.00"	3815.62	true	P	2000.0		6016	6015.62	23-Sep-2015 14:33:38
MOMAR	DSURT	TerrainPt_4_MOMAR:RW09_MOMAR:DSURT		4E (+-250/+125)	N33° 25' 51.00"	W116° 13' 45.00"	6190.94	true	P	2000.0		8391	8390.94	23-Sep-2015 14:33:37
DSURT	TRIXI	TerrainPt_33_MOMAR:RW09_DSURT:TRIXI		4E (+-250/+125)	N33° 03' 03.00"	W116° 28' 48.00"	5643.04	true	P	2000.0		7844	7843.04	23-Sep-2015 14:33:38
TRIXI	TOPGN	TerrainPt_27_MOMAR:RW09_TRIXI:TOPGN		4E (+-250/+125)	N32° 53' 30.00"	W116° 25' 15.00"	6263.12	true	P	2000.0		8464	8463.12	23-Sep-2015 14:33:38
TOPGN	ISEMN	TerrainPt_17_IPL:RW09_TOPGN:ISEMN		4E (+-250/+125)	N32° 42' 18.00"	W116° 33' 48.00"	4166.67	true	P	2000.0		6367	6366.67	23-Sep-2015 14:33:37
ISEMN	ZIPPP	TerrainPt_0_IPL:RW09_ISEMNI:ZIPPP		4E (+-250/+125)	N32° 35' 39.00"	W116° 50' 42.00"	3566.27	true	P	2000.0		5767	5766.27	23-Sep-2015 14:33:37
ZIPPP	TMCAT	TerrainPt_35_IPL:RW09_ZIPPP:TMCAT		4E (+-250/+125)	N32° 37' 57.00"	W116° 57' 33.00"	728.35	true	P	2000.0		2929	2928.35	23-Sep-2015 14:33:37

PKE:RW09 Criteria Failures

No failures.

Route Evaluation for TTRUE:RW09

TTRUE:RW09 Evaluation Results Part 1/2

Leg Tp	End Pt	Turn Tp	Alt Restr	Alt Restr 2	Spd Restr	Turn Ang	Leg Length	Min Seg Length
IF	TTRUE						0.0	0.0
TF	LINNE	FLY_BY				0.04	25.55	1.0
TF	SRRFR	FLY_BY				0.15	32.78	1.0
TF	TRRSH	FLY_BY				0.4	25.41	1.0
TF	SHADI	FLY_BY				7.62	7.84	1.0
TF	MOMAR	FLY_BY	+24000.0	-26000.0		0.01	11.13	1.0
TF	DSURT	FLY_BY	+19000.0	-23000.0		28.95	18.67	9.95
TF	TRIXI	FLY_BY	+12000.0	-14000.0	270.0	8.89	22.15	9.95
TF	TOPGN	FLY_BY	+9000.0	-10000.0		64.31	22.66	2.99
TF	ISEMN	FLY_BY				2.63	11.71	2.99
TF	ZIPPP	FLY_BY	+6000.0	-8000.0		20.07	8.57	1.82
TF	TMCAT	FLY_OVER	6000.0		210.0		10.34	1.82
FM							0.0	0.0

TTRUE:RW09 Evaluation Results Part 2/2

Leg Tp	End Pt	Turn Tp	DTA1	DTA1 Turn Rad	DTA1 Turn Alt	DTA1 Turn Spd	DTA1 Bank Ang	DTA1 Tailwind	DTA1 True Airspd	DTA1 vGround	DTA2	DTA2 Turn Rad	DTA2 Turn Alt	DTA2 Turn Spd	DTA2 Bank Ang	DTA2 Tailwind	DTA2 True Airspd	DTA2 vGround
IF	TTRUE				0.0	0.0							0.0	0.0				
TF	LINNE	FLY_BY	0.0		41000.0	300.0	0.0	128.0	629.0	570.0	0.02	54.11	41000.0	300.0	5.0	128.0	629.0	570.0
TF	SRRFR	FLY_BY	0.02	54.11	41000.0	300.0	5.0	128.0	629.0	570.0	0.07	54.11	35299.75	300.0	5.0	117.0	560.0	570.0
TF	TRRSH	FLY_BY	0.07	54.11	35299.75	300.0	5.0	117.0	560.0	570.0	0.19	54.11	28948.2	300.0	5.0	104.0	496.0	570.0
TF	SHADI	FLY_BY	0.19	54.11	28948.2	300.0	5.0	104.0	496.0	570.0	3.42	51.3	26988.66	300.0	5.0	100.0	479.0	555.0
TF	MOMAR	FLY_BY	3.42	51.3	26988.66	300.0	5.0	100.0	479.0	555.0	0.0		24204.91	300.0	0.0	95.0	456.0	528.0
TF	DSURT	FLY_BY	0.0		24204.91	300.0	0.0	95.0	456.0	528.0	9.95	38.53	19538.4	300.0	5.0	86.0	420.0	481.0
TF	TRIXI	FLY_BY	9.95	38.53	19538.4	300.0	5.0	86.0	420.0	481.0	2.56	32.9	14000.0	270.0	4.45	75.0	344.0	419.0
TF	TOPGN	FLY_BY	2.56	32.9	14000.0	270.0	4.45	75.0	344.0	419.0	2.99	4.75	10000.0	270.0	25.0	67.0	323.0	390.0
TF	ISEMN	FLY_BY	2.99	4.75	10000.0	270.0	25.0	67.0	323.0	390.0	2.22	96.66	10000.0	270.0	1.31	67.0	323.0	390.0
TF	ZIPPP	FLY_BY	2.22	96.66	10000.0	270.0	1.31	67.0	323.0	390.0	1.82	10.26	8000.0	250.0	10.04	63.0	290.0	353.0
TF	TMCAT	FLY_OVER	1.82	10.26	8000.0	250.0	10.04	63.0	290.0	353.0	0.0		6000.0	210.0	0.0	59.0	236.0	295.0
FM			0.0		6000.0	210.0	0.0	59.0	236.0	295.0			0.0	0.0				

TTRUE:RW09 Obstacle Evaluation

Start Pt	End Pt	Name	Source	AC (H/V) (ft) AMSL)	Lat	Long	Height (ft) AMSL	Mnts Area	Pri/Sec Area	ROC (ft)	WCVH (ft)	MOCA (ft)	Min OCS Alt (ft)	Date
TTRUE	LINNE	TerrainPt_13_TTRUE:RW09_TTRUE:LINNE		4E (+-250/+125)	N34° 23' 21.00"	W114° 48' 30.00"	3766.4	true	P	2000.0		5967	5966.4	23-Sep-2015 14:33:40
LINNE	SRRFR	TerrainPt_31_TTRUE:RW09_LINNE:SRRFR		4E (+-250/+125)	N34° 15' 39.00"	W114° 49' 42.00"	4304.46	true	P	2000.0		6505	6504.46	23-Sep-2015 14:33:40
SRRFR	TRRSR	TerrainPt_0_TTRUE:RW09_SRRFR:TRRSR		4E (+-250/+125)	N33° 44' 24.00"	W115° 43' 21.00"	4688.32	true	P	2000.0		6889	6888.32	23-Sep-2015 14:33:40
TRRSR	SHADI	TerrainPt_29_TTRUE:RW09_TRRSR:SHADI		4E (+-250/+125)	N33° 44' 24.00"	W115° 43' 21.00"	4688.32	true	P	2000.0		6889	6888.32	23-Sep-2015 14:33:40
SHADI	MOMAR	TerrainPt_8_PKE:RW09_SHADI:MOMAR		4E (+-250/+125)	N33° 34' 09.00"	W115° 46' 51.00"	3815.62	true	P	2000.0		6016	6015.62	23-Sep-2015 14:33:38
MOMAR	DSURT	TerrainPt_4_MOMAR:RW09_MOMAR:DSURT		4E (+-250/+125)	N33° 25' 51.00"	W116° 13' 45.00"	6190.94	true	P	2000.0		8391	8390.94	23-Sep-2015 14:33:37
DSURT	TRIXI	TerrainPt_33_MOMAR:RW09_DSURT:TRIXI		4E (+-250/+125)	N33° 03' 03.00"	W116° 28' 48.00"	5643.04	true	P	2000.0		7844	7843.04	23-Sep-2015 14:33:38
TRIXI	TOPGN	TerrainPt_27_MOMAR:RW09_TRIXI:TOPGN		4E (+-250/+125)	N32° 53' 30.00"	W116° 25' 15.00"	6263.12	true	P	2000.0		8464	8463.12	23-Sep-2015 14:33:38
TOPGN	ISEMN	TerrainPt_17_IPL:RW09_TOPGN:ISEMN		4E (+-250/+125)	N32° 42' 18.00"	W116° 33' 48.00"	4166.67	true	P	2000.0		6367	6366.67	23-Sep-2015 14:33:37
ISEMN	ZIPPP	TerrainPt_0_IPL:RW09_ISEMNI:ZIPPP		4E (+-250/+125)	N32° 35' 39.00"	W116° 50' 42.00"	3566.27	true	P	2000.0		5767	5766.27	23-Sep-2015 14:33:37
ZIPPP	TMCAT	TerrainPt_35_IPL:RW09_ZIPPP:TMCAT		4E (+-250/+125)	N32° 37' 57.00"	W116° 57' 33.00"	728.35	true	P	2000.0		2929	2928.35	23-Sep-2015 14:33:37

TTRUE:RW09 Criteria Failures

No failures.

Evaluation Input

Name:	RS Results RW09
Project:	SAN TOPGN STAR paperwork_20150519
Last evaluated:	23-Sep-2015 14:31:52
Evaluated obstacles?:	true
Obstacle Database:	AVNIS
Evaluated terrain?:	true
Worst Case Vegetation Height (ft) AGL:	0

Terrain Information

Terrain Extractor Name	Extractor Location	Extractor Type	Resolution
DTED 3 Sec	C:\Program Files (x86)\TARGETS\data\DTED-3Sec	org.mitre.caasd.terrain.DTEExtractor	3.0

Procedure Criteria Failures

No failures.

Evaluation Notes and Warnings

No failures.

Obstacles Requiring Accuracy Code Verification

None.

Database Effective Dates

Database	Date
Tiled AVNII	N/A
OEAAA	N/A
NFDC	08/20/2015
IFP_OFFLINE	N/A
AVNIS	09/23/2015
DOF	09/17/2015
AVNII_OFFLINE	N/A
AVNII	09/23/2015
CIFP	09/17/2015

Notes: